

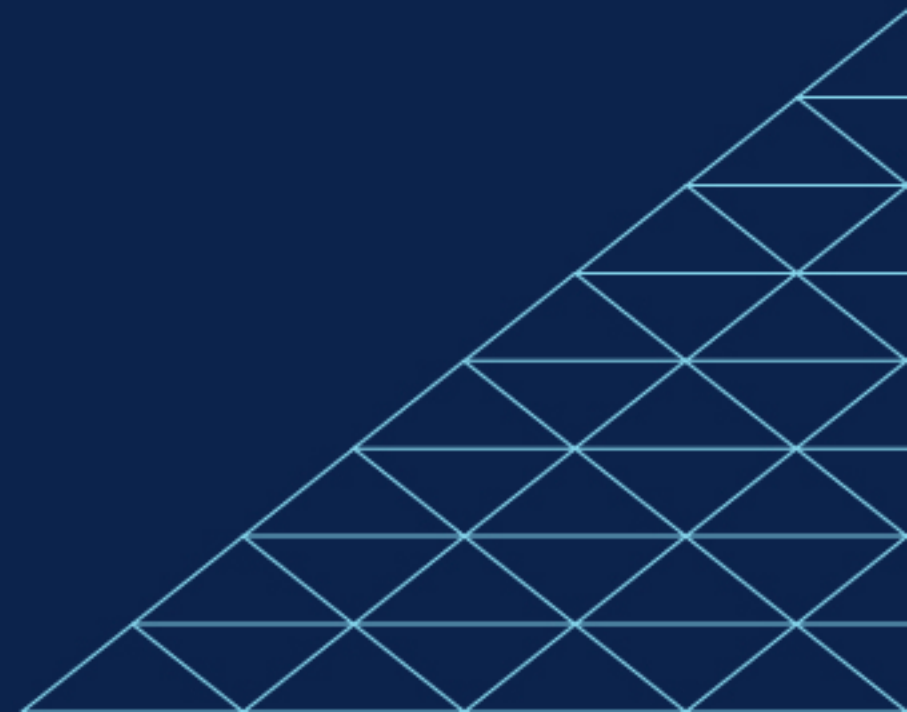
FOCUS GROUP SESSION

FACILITIES AND OPERATIONS COMMITTEE

UNIVERSITY OF ARIZONA – SIERRA VISTA

**COLLEGE OF APPLIED SCIENCE
& TECHNOLOGY (CAST)**

AYERS SAINT GROSS INTRODUCTION / APRIL 12, 2022

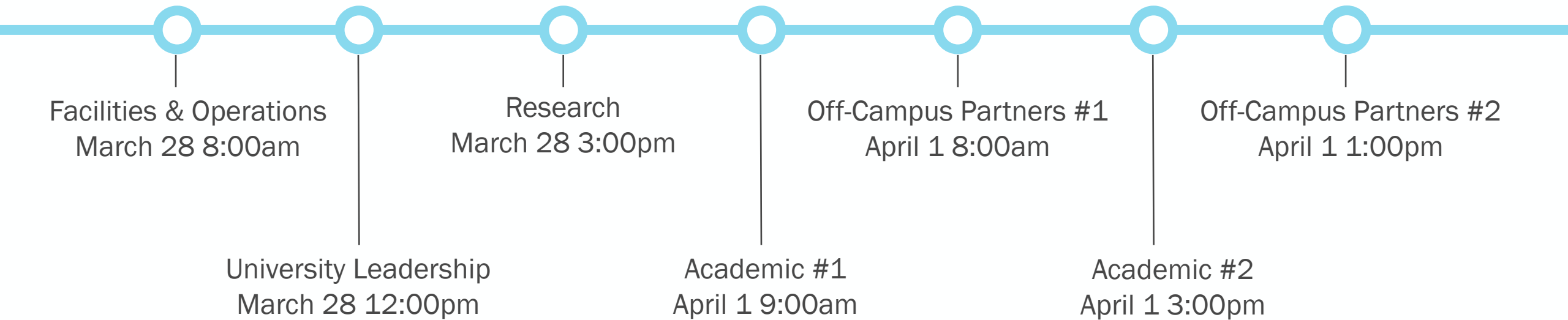


Agenda

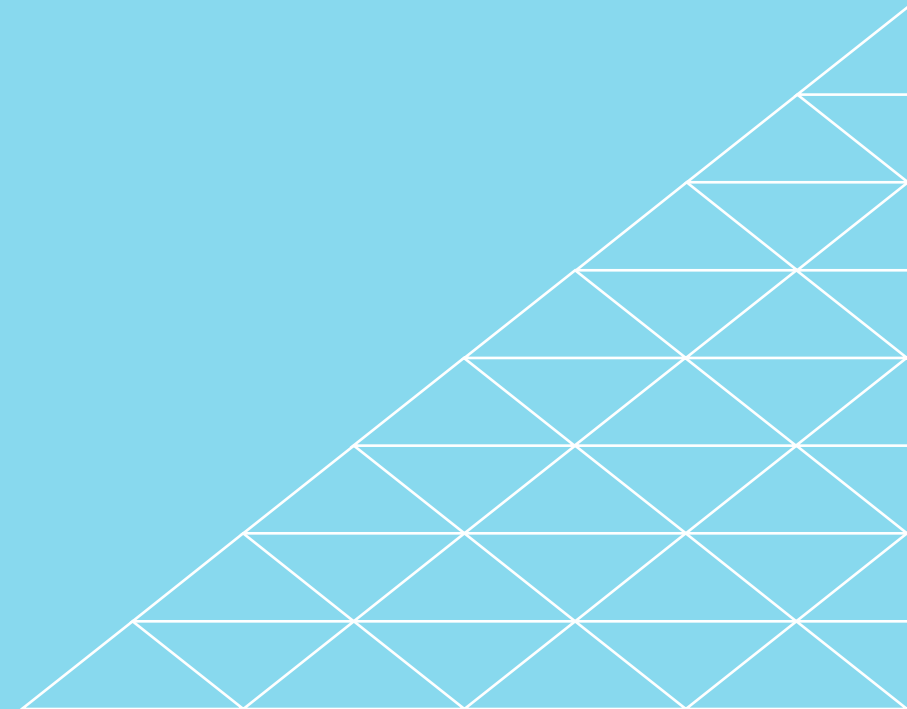
- Campus Context
- Academic, Research & Community Drivers
- Campus Development & Capacity
- Next Steps

Focus Group Sessions

Previous Meetings



CAMPUS CONTEXT



Dr. Packard's Vision for the Campus

CAST's Five Year Plan: 2021 - 2026



PAST



PRESENT



FUTURE

- Mission, Vision, & Values
- Our Flywheel
- Annual Review and Process
- Alignment to UArizona's Strategic Pillars

"...rooted in the best traditions of the past, taught in the context of the present, and continually reexamined in the light of the future needs."

- Lt Gen James E. Briggs, U.S. Air Force Academy's 2nd Superintendent.

Achieving the Objectives in the Strategic Plan

Impacting Facilities and Operations

RECRUIT AND HIRE DIVERSE FACULTY AND STAFF WHO ARE PASSIONATE ABOUT OUR VALUES

- **Hire Faculty and Staff to keep up with growth and diversify**
- **Increase full time faculty by 50% over first two years, then grow at the pace of student growth in years 3 -5**
- **Hire staff & administrators to keep up with growth**
- Increase Tenure Track Faculty to 25% - 30% of permanent faculty lines
- Publish College Promotion, Evaluation, Mentoring, & Onboarding Policy
- Publish College hiring policy and fund hiring outreach to increase diversity and qualifications of applicants in hiring pools
- Complete a position review to ensure equity and alignment to mission
- Pursue at least two Strategic Priorities Faculty Initiative (SPFI) hires

BUILD WORLD CLASS INFRASTRUCTURE AND EFFECTIVE ORGANIZATIONAL STRUCTURE

- Coordinate with the University CFO to establish a distinct accounting line to track legislative allocation to support activity at the Sierra Vista Branch Campus
- **Publish Campus Master Plan in coordination with main campus, University South Foundation, Cochise CC, & the City of Sierra Vista**
- Review and initiate College org structure for the future
- **Move facilities management back to the SV Campus**
- **Renovate Groth Hall by summer of 2023 to align with 30th Anniversary**
- **Complete construction of new applied research building**
- **Renovate Arizona Folklore Preserve to include Digital Humanities**
- **Refresh technology infrastructure to keep pace with CAST's innovative online teaching and Virtual Learning Environment**
- **Reinvigorate community and regional partnerships**

MENTOR, RETAIN AND MOTIVATE FACULTY WHO DELIVER WORLD CLASS, 4TH IR EDUCATION AND UNDERGRAD RESEARCH

- Elevate the work of the DEI Committee to continuously improve our inclusive culture benefiting a diverse faculty and student population
- Complete and implement college mentoring program
- **Prepare college on-boarding program for upcoming hiring surge**
- Update and fund faculty awards process
- Pursue Endowment for CAST's first named professor
- **Hire Associate Dean for Applied Research & Development**

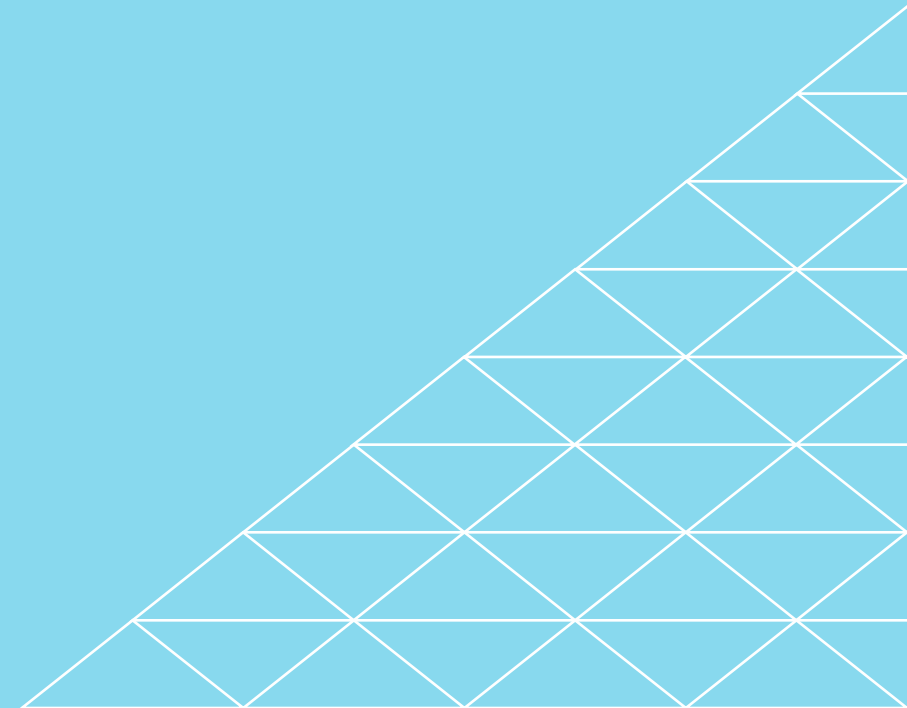
RECRUIT, ADVISE AND INSPIRE DIVERSE, POST-TRADITIONAL TRANSFER STUDENTS TO IMPACT OUR REGION AND THE WORLD

- Complete MOA with Vice Provost for ODCE
- **Reach 5,000 students (certificates, minors, BAS, PSM) by the end of the five-year plan**
- **In-person advisor/recruitment specialist in Sierra Vista, Pima East, Chandler, and Yuma**
- Building on the success of the Basha High School/Chandler-Gilbert CC/CAST pipeline in Cyber Ops, pursue similar partnerships in Cyber and other programs throughout AZ
- **Further our partnerships with DoD Community Colleges and Education**
- **Grow partnerships with Federal & regional LE agencies**
- Expand student awards and scholarships to increase accessibility
- Grow partnership with Global Direct & pursue educational partnerships with Mexico

DEVELOP & DELIVER RIGOROUS AND RELEVANT EDUCATION AND RESEARCH THEN ASSESS OUR PROGRESS THROUGH REGULAR PROGRAM REVIEW

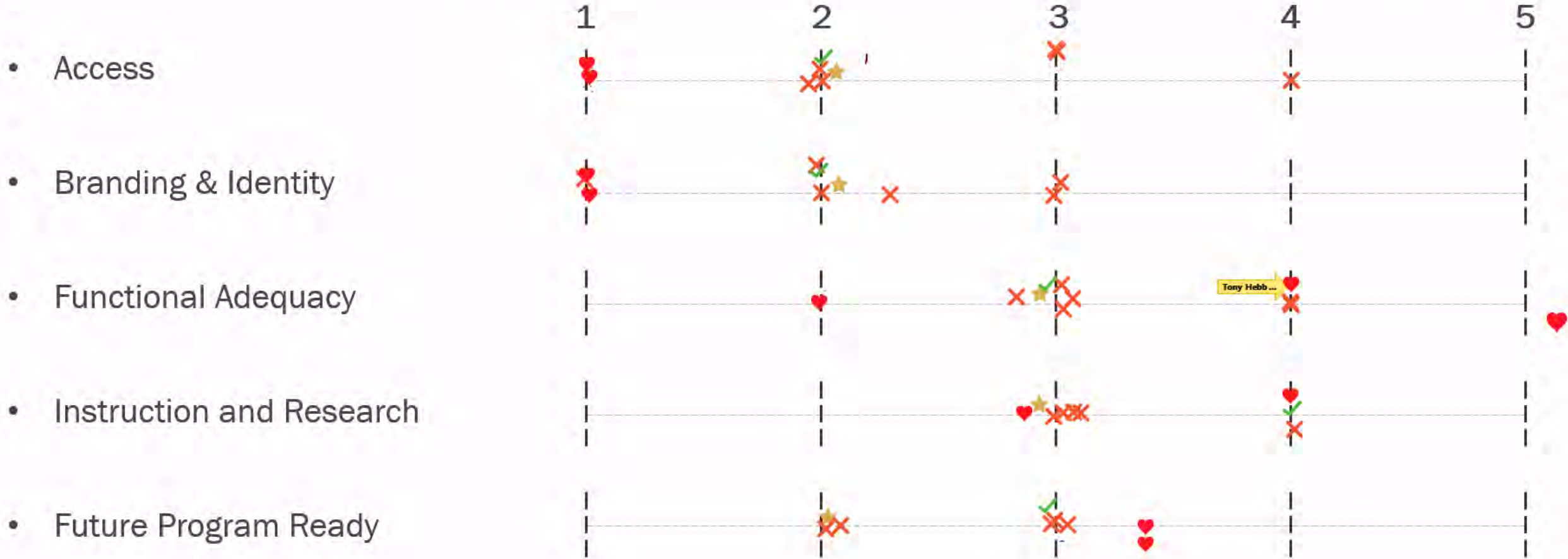
- **Launch 6 –9 Professional Science Masters Degrees over 5 years**
- Start with an educational technology focused degree in Fall of 2022
- Built with stackable Masters Certificates
- **Establish innovation guidelines and encourage sustainable creativity**
- Establish & fund College professional development process
- Develop a student-centric (undergrad & grad) applied research portfolio designed to support best practices in education while impacting a 21st century world
- Solidify our national reputation as a leader in rigorous online & hybrid transfer education for the 21st century workforce

CAMPUS DEVELOPMENT & CAPACITY



How do you rate the overall campus in the following categories?

Please use the stamp tool on a scale of 1 to 5 to indicate how well the campus spaces serve the following categories. (5 being the strongest)



Local Context

- Access
- Wayfinding
- Community
- Identity
- Branding



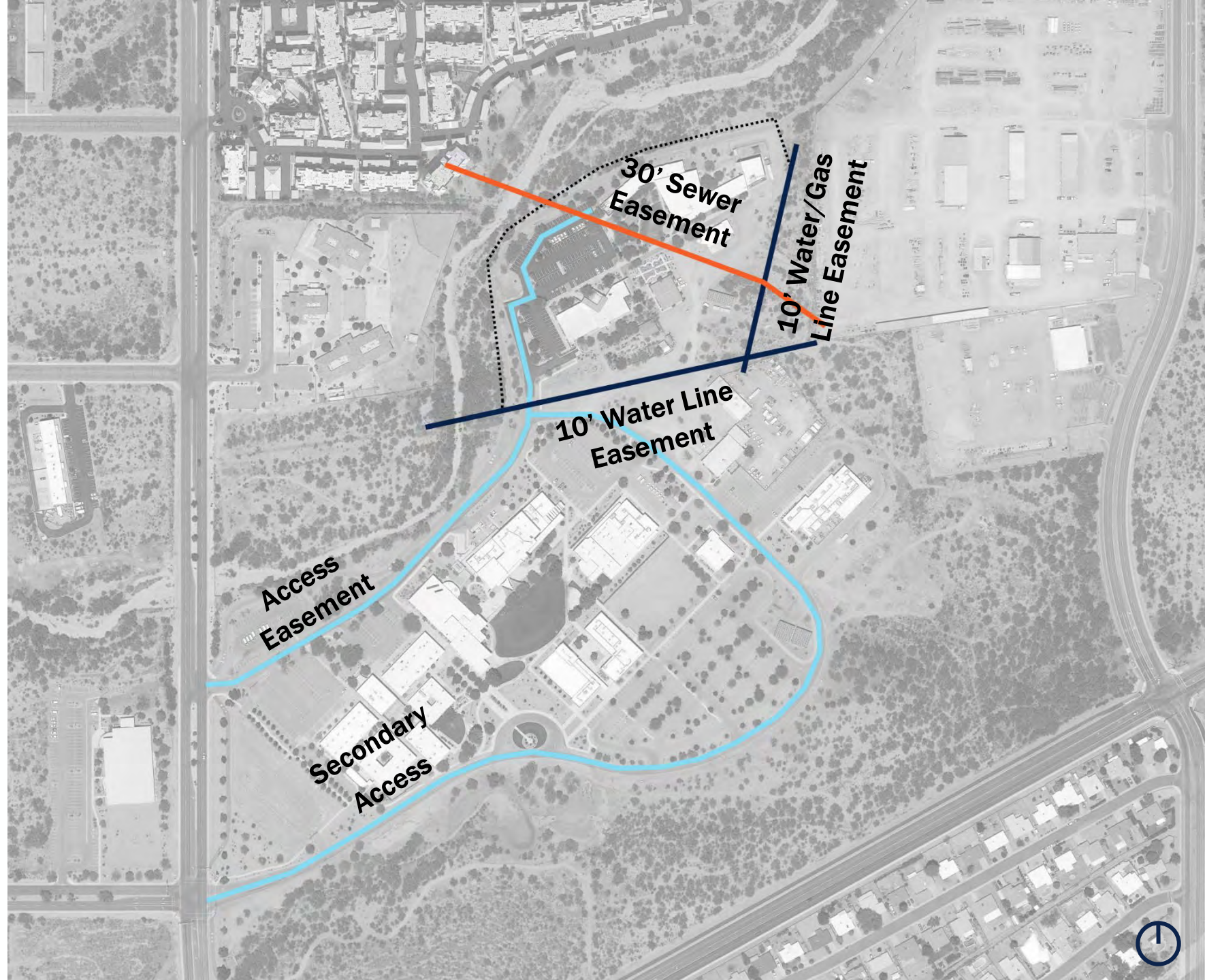
UA CAST UTILITY EASEMENTS

Campus Site*: ~8.25 Acres

Facilities*: ~40,000 NSF

- 30' Sewer Easement
- 10' Water Line Easement
- 10' Water / Gas Line
- Access Easement
- Secondary Access

*Note: Values vary by source



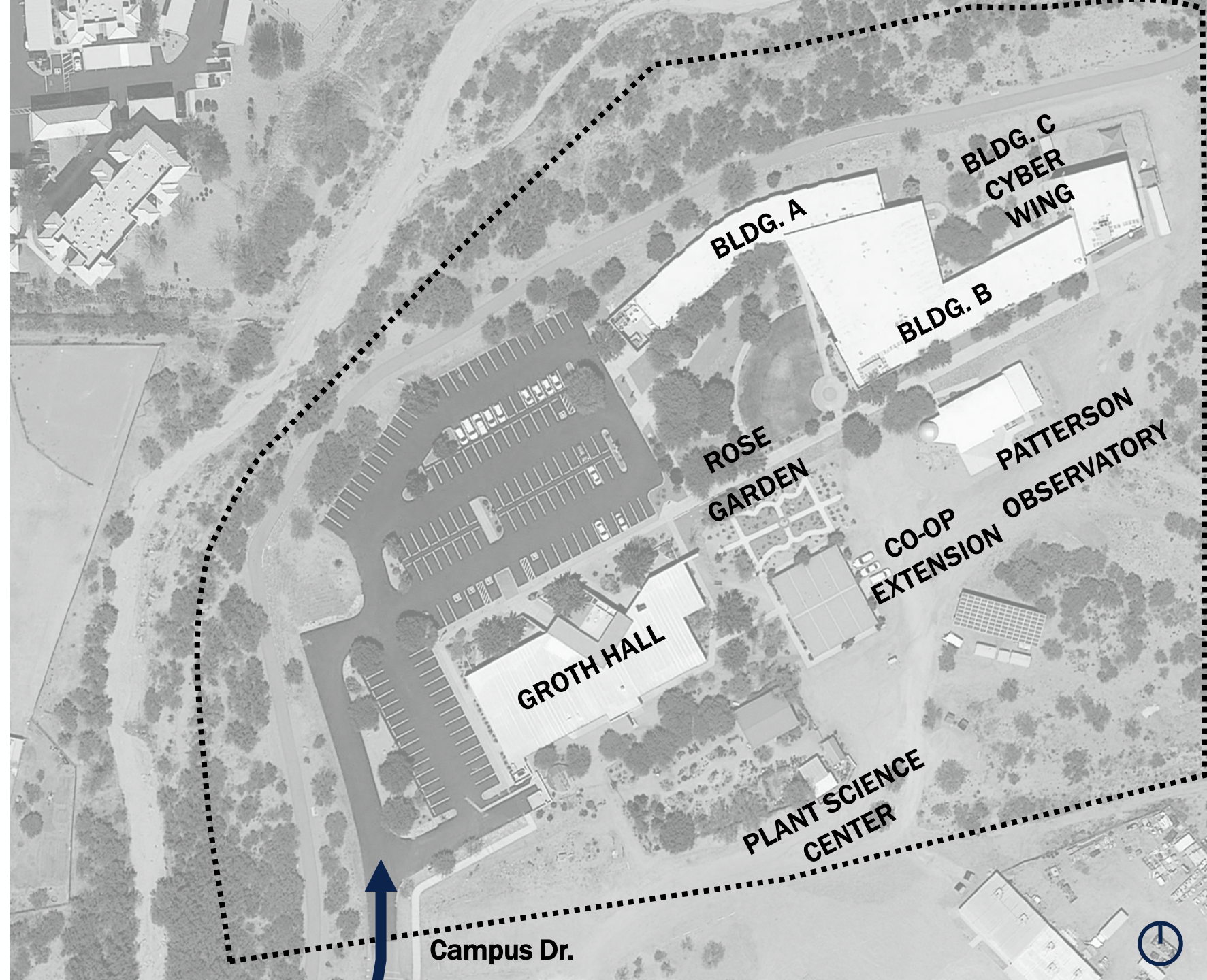
UA CAST CAMPUS

Campus Site*: ~8.25 Acres

Facilities*: ~40,000 NSF

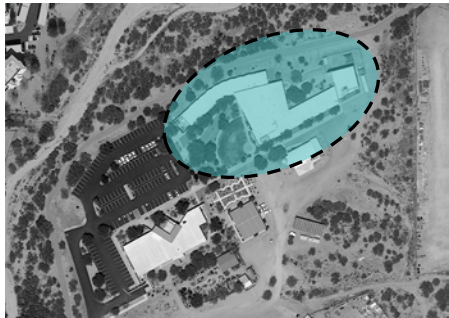
- Access
- Campus
- Density
- Framework
- Service
- Infrastructure

*Note: Values vary by source



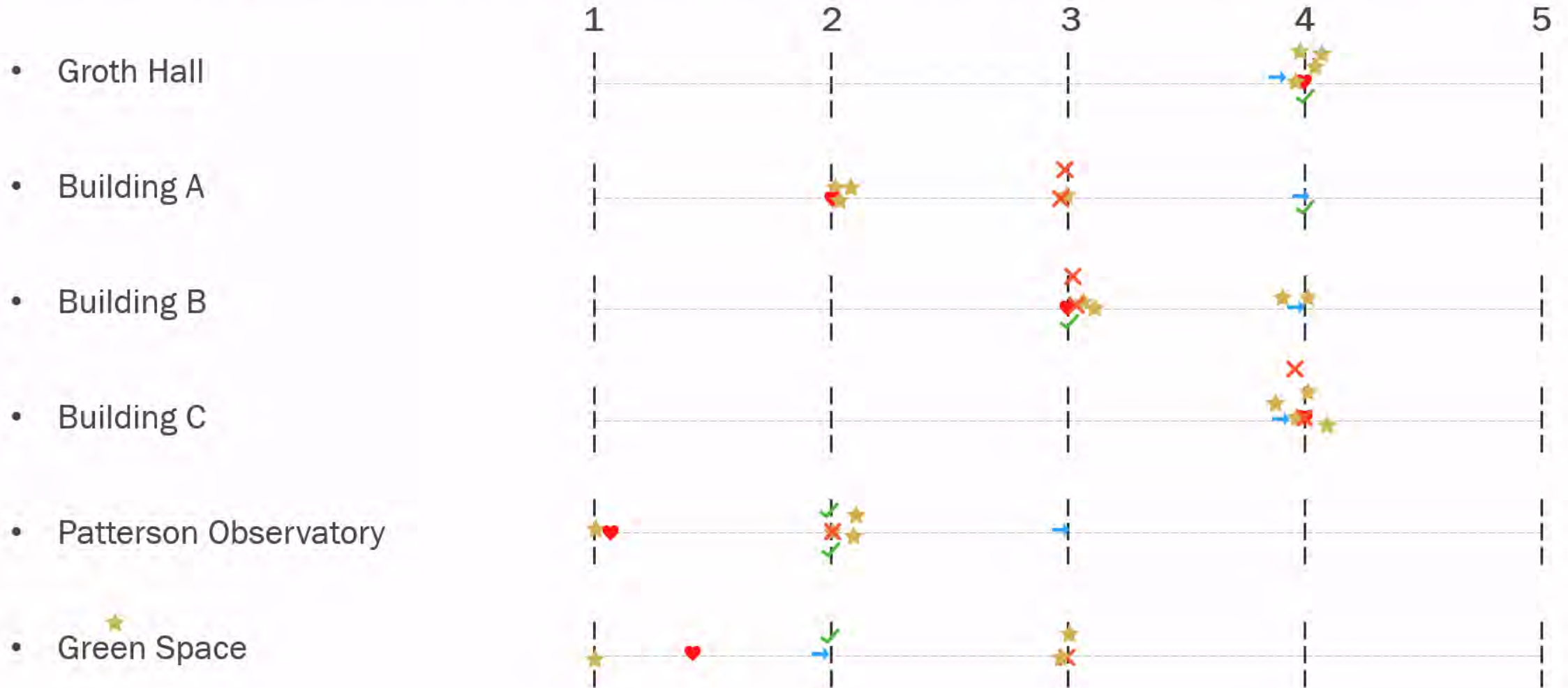
Site

- First buildings opened in 1995
- Adjacent to Cochise College
- Includes Patterson observatory
- Room to grow



How do you rate the campus elements as they support current programs?

Please use the stamp tool on a scale of 1 to 5 to indicate how well the campus spaces serve the following categories. (5 being the strongest)



Folklore Center

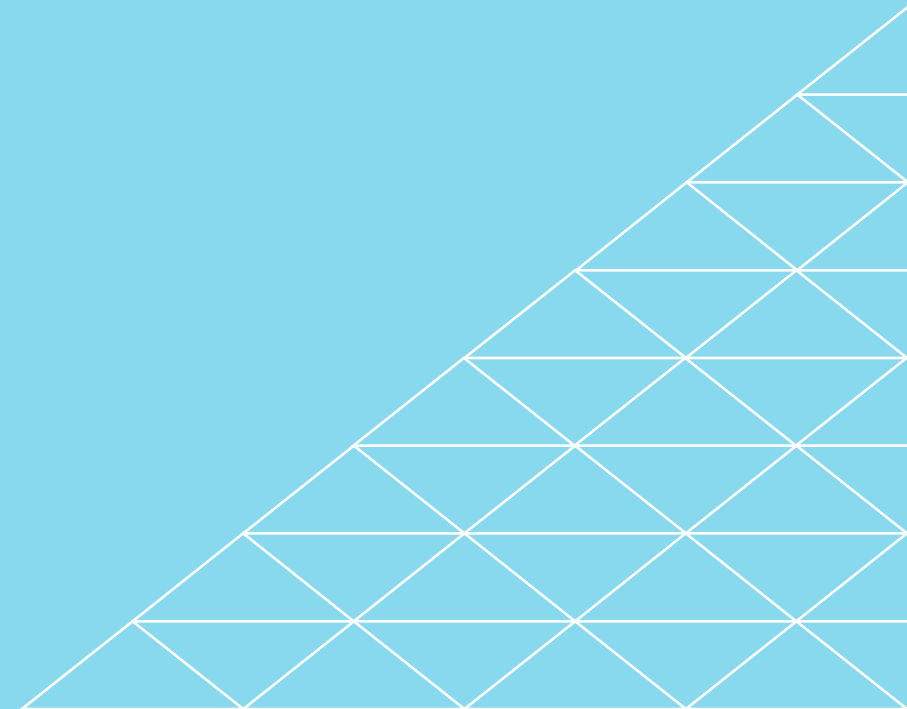


How do you rate the Folklore Center in the following categories?

Please use the stamp tool on a scale of 1 to 5 to indicate how well the campus spaces serve the following categories. (5 being the strongest)



NEXT STEPS



Next Steps

- Develop Academic, Research & Community Impacts
- Return for input and help in development and implementation of academic and research programs
- Advance technical assessment and land/property issues
- Forecast campus density, capacity, and infrastructure