

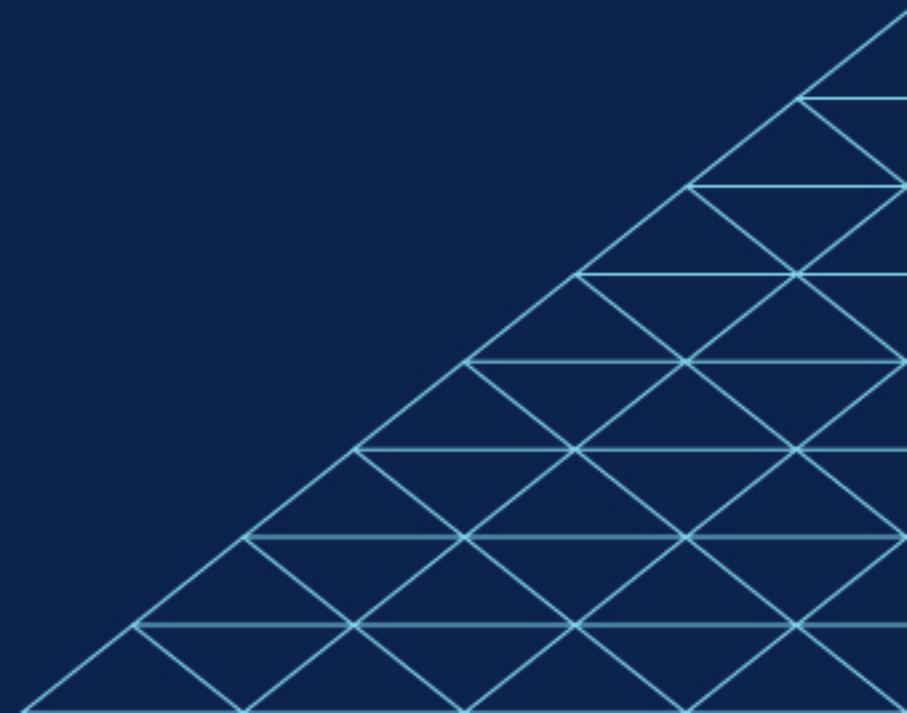
FOCUS GROUP SESSION

FACILITIES AND OPERATIONS COMMITTEE

UNIVERSITY OF ARIZONA – SIERRA VISTA

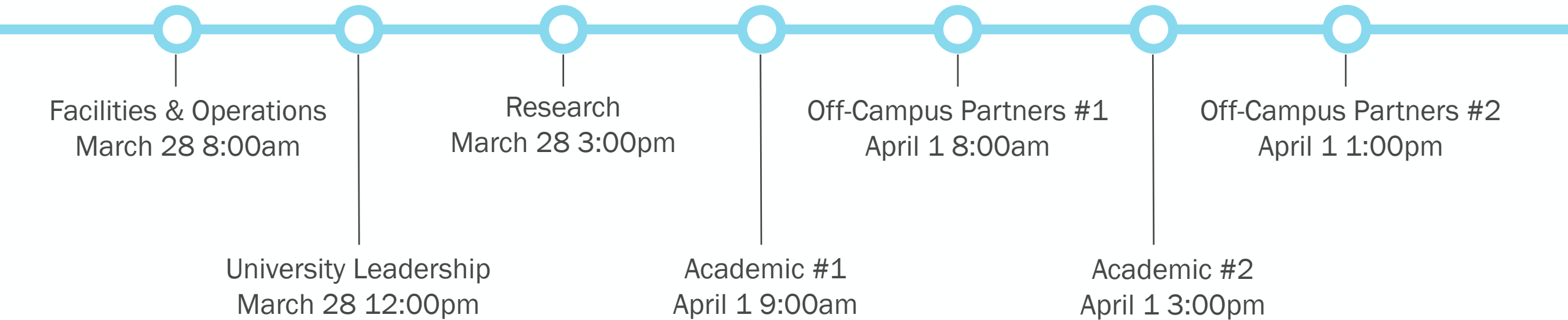
**COLLEGE OF APPLIED SCIENCE
& TECHNOLOGY (CAST)**

AYERS SAINT GROSS INTRODUCTION / MARCH 28, 2022



Focus Group Sessions

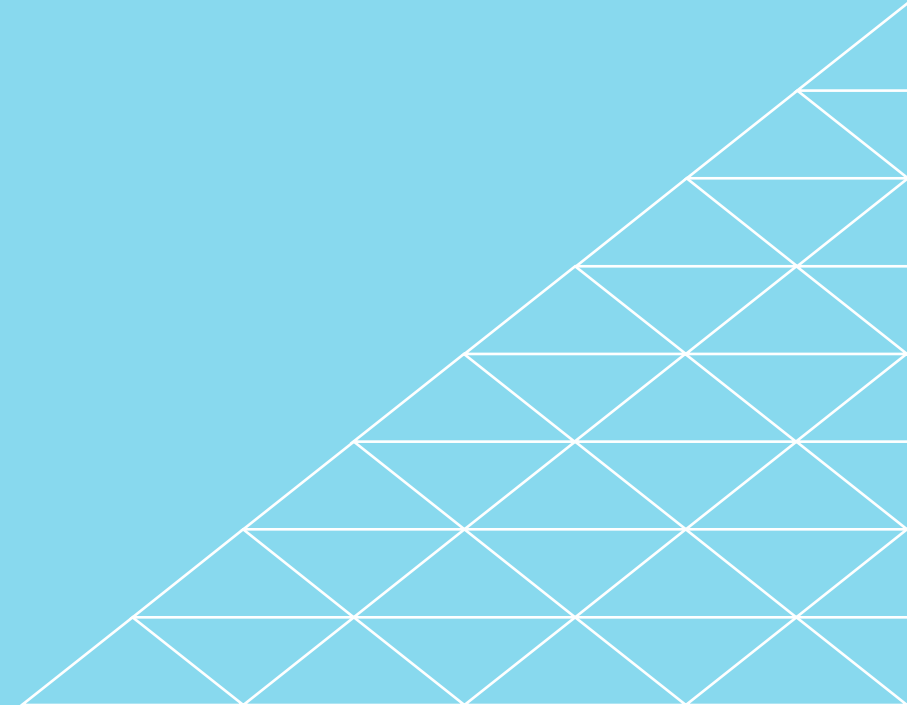
Upcoming Schedule



Agenda

- Team Introductions
- Process
- Campus Context
- Academic, Research & Community Drivers
- Campus Development & Capacity
- Next Steps

TEAM INTRODUCTIONS



Facilities and Operations Focus Group

Bruce Overland

Main Campus
Facilities

Luis Rocha

Main Campus
Facilities

Vincent Natale

Main Campus
Facilities

Erik Reinold

Main Campus
Facilities

Drew Lutz

Main Campus
Facilities

Chuck Potucek

Sierra Vista City
Manager

Chuck Smith

CAST Business
Manager

Kory McCaw

General Maintenance
Supervisor, Sierra
Vista Campus

Brian Bates

CAST IT Manager

Emily Vickers

CAST Marketing and
Communications

Tony Hebblethwaite

CAST Marketing and
Communications

Mike Boardman

President, Huachuca
50

Chris Kopach

Associate Vice
President Facilities
Management

Meet the UA – Planning, Design & Construction Team



Peter Dourlein

Associate Vice
President, University
Architect



Ed Galda

Planning Manager



Mark Novak

University Landscape
Architect

Meet the Ayers Saint Gross Team

Planning Consultant for the CAST Masterplan Project



Jack Black
Principal-in-Charge
& Engagement



Ray Byrd
Campus Planner
& Engagement



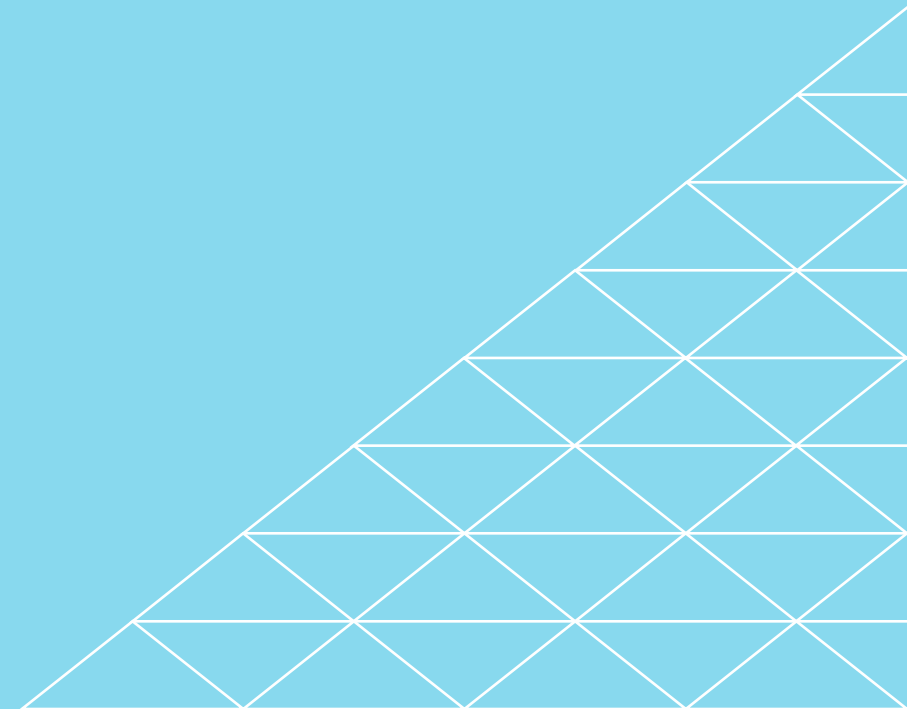
**Ashwin
Dharmadhikari**
Campus Planner
& Engagement

Inclusive, flexible, and creative engagement expertise.

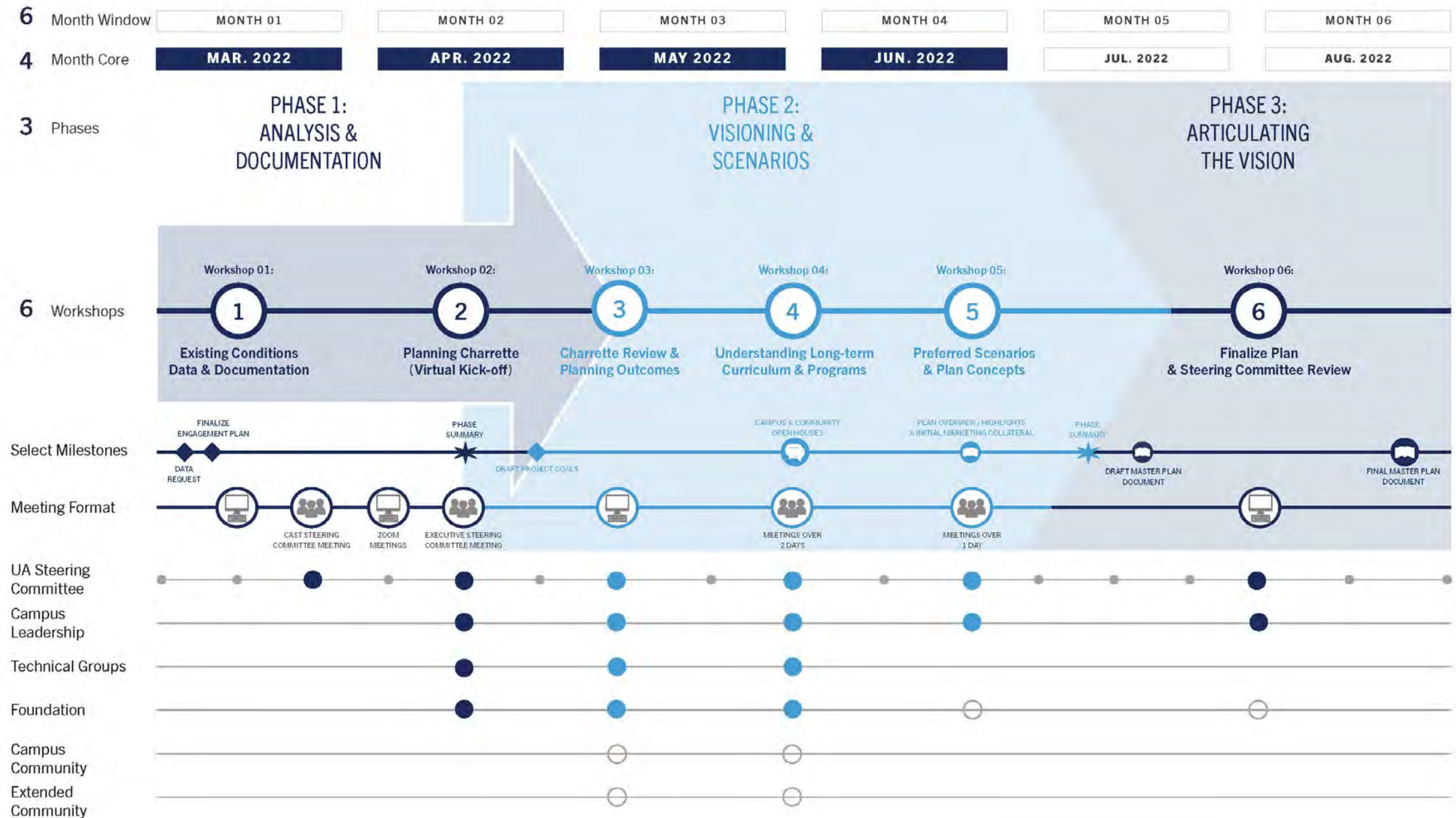
Facilities and Operations Committee Objectives

- Identify recent, near-term, and proposed campus projects
- Understand the context of on-site constraints and easements
- Develop overall utility and infrastructure analysis and capacity needs
- Understand current and future sustainability impacts and needs
- Analyze water and stormwater treatment on campus
- Identify and update service issues on campus
- Create building conditions, performance, and maintenance
- Assess functional adequacy and utilization
- Understanding boundary conditions and neighbor context
- Discuss branding and identity opportunities
- Discuss campus access
- Discuss the impacts of new programs and building types
- Discuss emerging Issues

PROCESS



Proposed Process Schedule



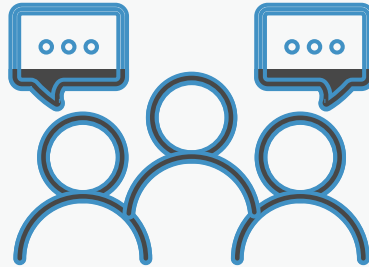
PROCESS

Observe and Assess



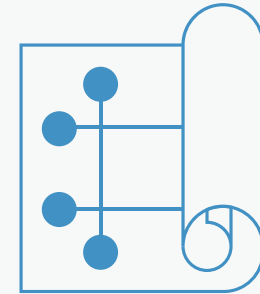
Get to know
UA Sierra Vista Campus

Envision and Test



Explore and evaluate
ideas together

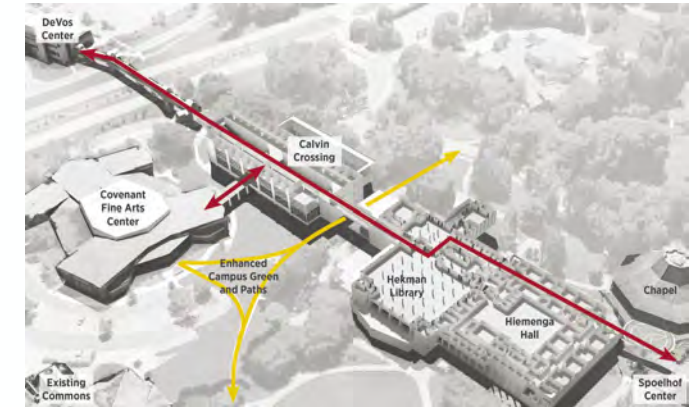
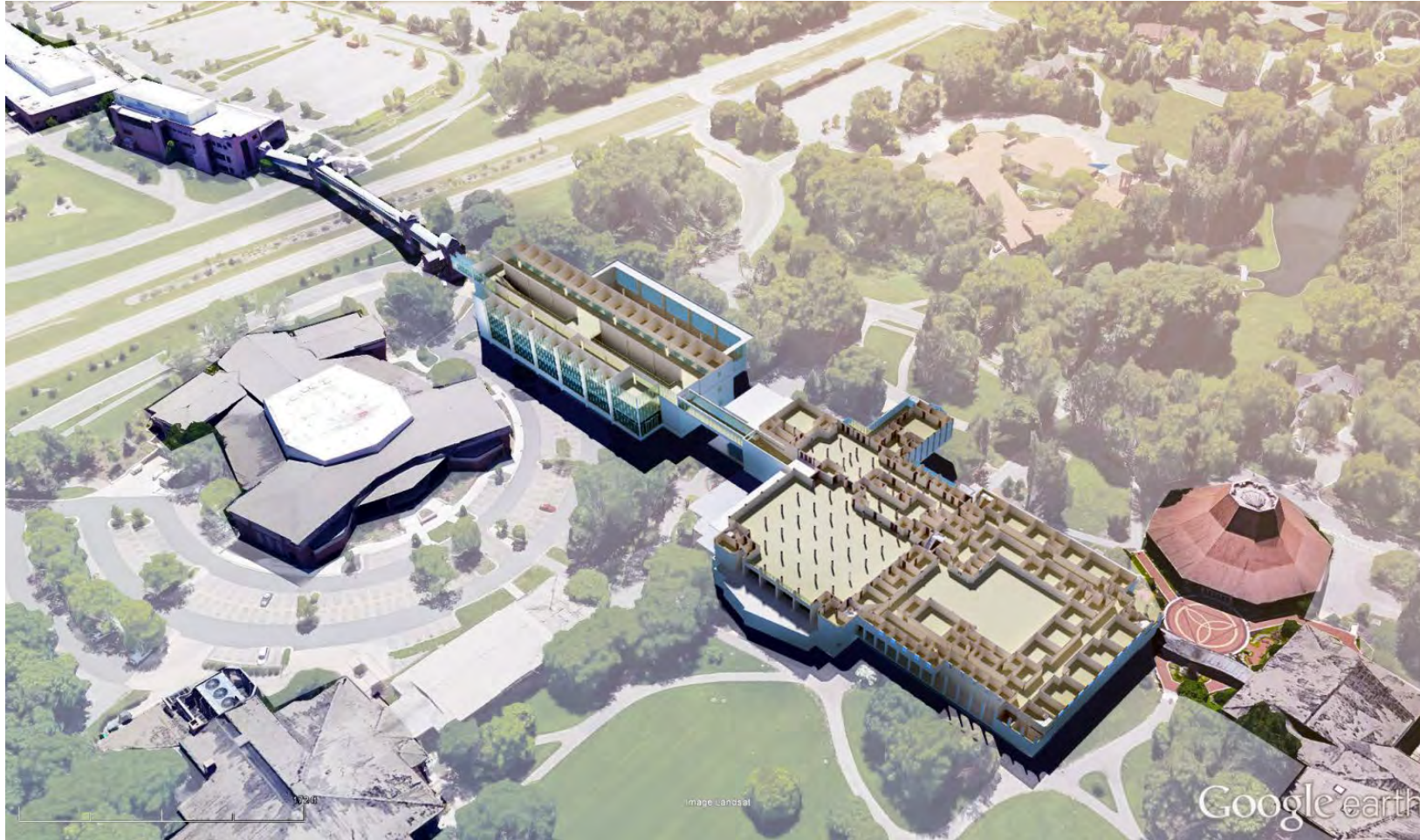
Synthesize



Capture the process
and current thinking

Process

Creating a process & experience to support decisions



Process

Identify long-term capacity and engineering needs



Water Loop

- Pressurized Fire water Line
- Fire Hydrant
- Pressurized Water Main



StormWater System

- Stormwater Collection Channel
- Stormwater Retention Pond



Chilled Water Loop

- Chilled Water Loop
- Direct Buried Isolation Valve
- Central Plant



Telecommunications Loop

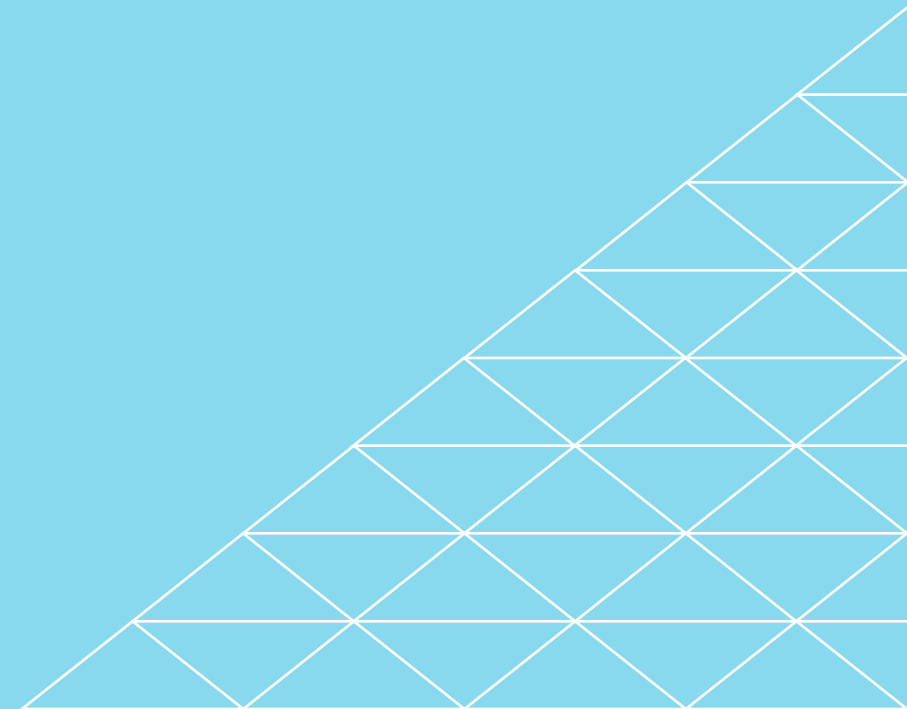
- Primary Service Connection
- Secondary Service Connection
- Campus Backbone Network
- Redundant Campus Network



Electrical Loop

- Electrical Loop
- Electrical Manhole
- Central Plant

CAMPUS CONTEXT



CAST Community (Spring 2022)

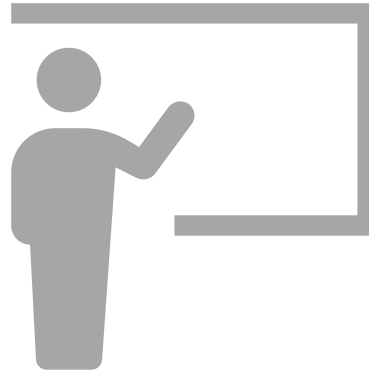
University of Arizona College of Applied Science & Technology



2,133

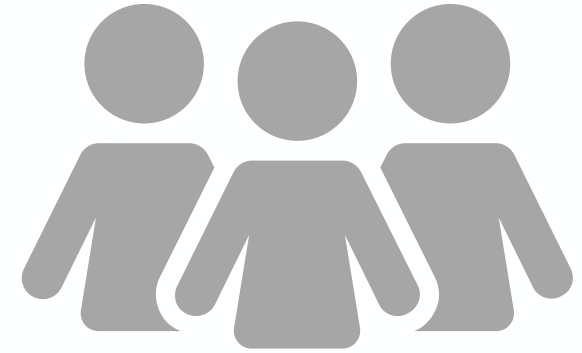
Students

24% increase Spring
2021 to Spring 2022



92

Faculty



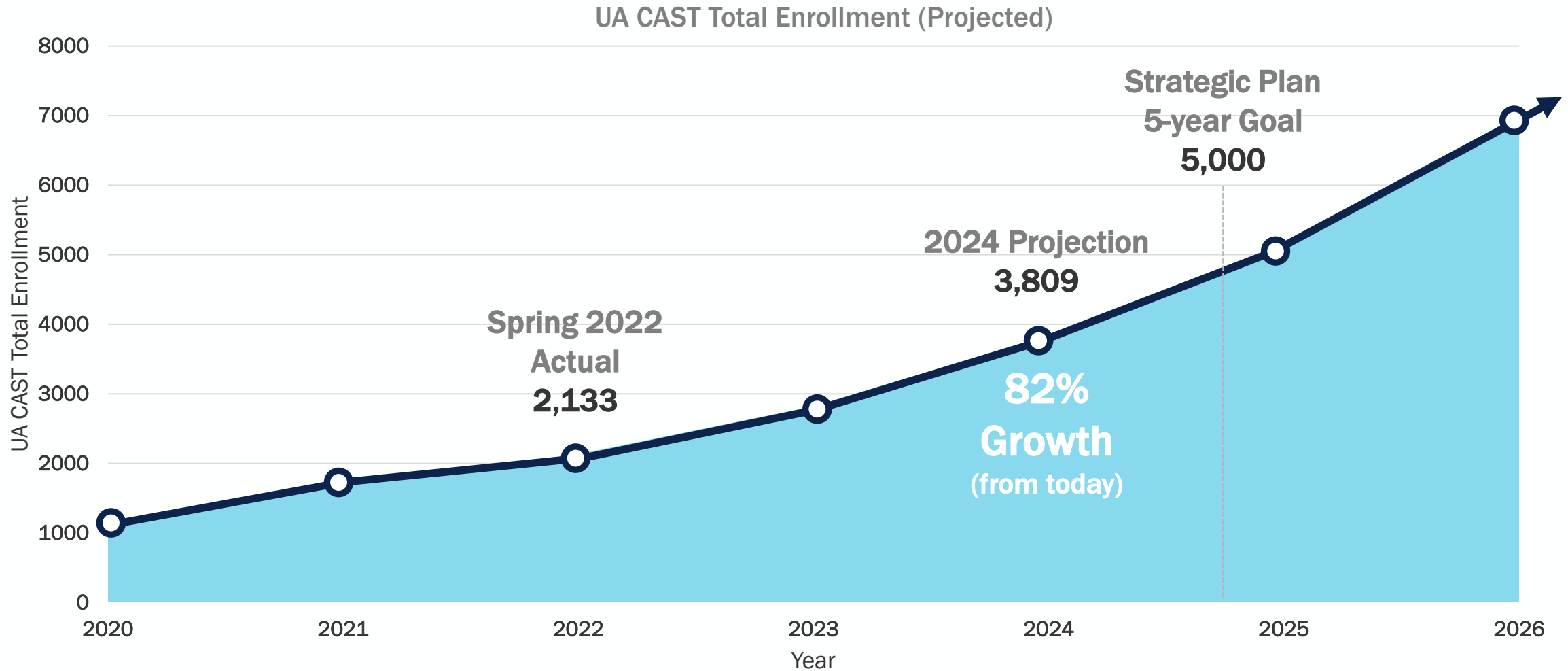
48

Staff

5 – Administrators
8 – Student Workers
35 – Staff

Forecasted Growth

University of Arizona College of Applied Science & Technology



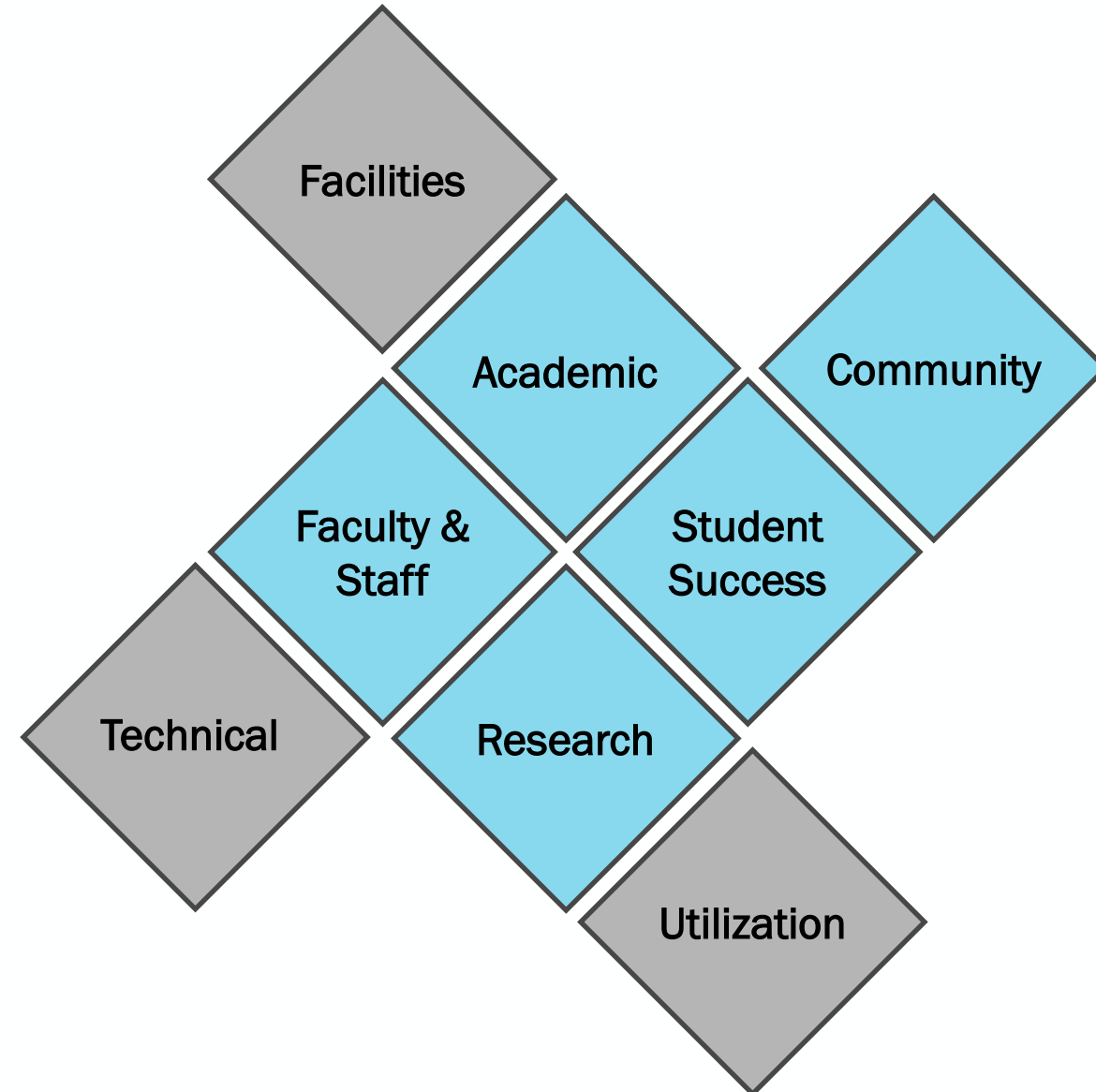
Key Drivers

The key drivers that inform the master planning process include:

- **Academic** needs of current and future programs
- Unique delivery of curriculum
- Current and future **Research** needs
- **Student Success** Integration
- **Faculty and Staff** support
- Support **Community** aspirations and needs

Other Drivers

- **Technical** understanding of the site constraints and conditions
- Current and future **Utilization Profiles**
- Existing use of facilities and their role for future



Dr. Packard's Vision for the Campus

CAST's Five Year Plan: 2021 - 2026



PAST



PRESENT



FUTURE

- Mission, Vision, & Values
- Our Flywheel
- Annual Review and Process
- Alignment to UArizona's Strategic Pillars

"...rooted in the best traditions of the past, taught in the context of the present, and continually reexamined in the light of the future needs."

- Lt Gen James E. Briggs, U.S. Air Force Academy's 2nd Superintendent.

Values, Vision, & Mission

VALUES

UArizona Values: Integrity, Compassion, Exploration, Adaptation, Inclusion, Determination

CAST Values: Respect for Human Dignity, Teamwork, Ethical Digital Citizenry, Applied Education For the Work Force, Applied Student-Powered Research, Community Impact

VISION

The Nation's leader in accessible, 21st Century applied science and technology education & research for post-traditional transfer students who will lead our future

MISSION

Work at the convergence of social science and technology to deliver rigorous, 4th Industrial Revolution applied education & research to our region and our world



THE UNIVERSITY OF ARIZONA

College of Applied
Science & Technology

Achieving the Objectives in the Strategic Plan

Impacting Facilities and Operations

RECRUIT AND HIRE DIVERSE FACULTY AND STAFF WHO ARE PASSIONATE ABOUT OUR VALUES

- **Hire Faculty and Staff to keep up with growth and diversify**
- **Increase full time faculty by 50% over first two years, then grow at the pace of student growth in years 3 -5**
- **Hire staff & administrators to keep up with growth**
- Increase Tenure Track Faculty to 25% - 30% of permanent faculty lines
- Publish College Promotion, Evaluation, Mentoring, & Onboarding Policy
- Publish College hiring policy and fund hiring outreach to increase diversity and qualifications of applicants in hiring pools
- Complete a position review to ensure equity and alignment to mission
- Pursue at least two Strategic Priorities Faculty Initiative (SPFI) hires

BUILD WORLD CLASS INFRASTRUCTURE AND EFFECTIVE ORGANIZATIONAL STRUCTURE

- Coordinate with the University CFO to establish a distinct accounting line to track legislative allocation to support activity at the Sierra Vista Branch Campus
- **Publish Campus Master Plan in coordination with main campus, University South Foundation, Cochise CC, & the City of Sierra Vista**
- Review and initiate College org structure for the future
- **Move facilities management back to the SV Campus**
- **Renovate Groth Hall by summer of 2023 to align with 30th Anniversary**
- **Complete construction of new applied research building**
- **Renovate Arizona Folklore Preserve to include Digital Humanities**
- **Refresh technology infrastructure to keep pace with CAST's innovative online teaching and Virtual Learning Environment**
- **Reinvigorate community and regional partnerships**

MENTOR, RETAIN AND MOTIVATE FACULTY WHO DELIVER WORLD CLASS, 4TH IR EDUCATION AND UNDERGRAD RESEARCH

- Elevate the work of the DEI Committee to continuously improve our inclusive culture benefiting a diverse faculty and student population
- Complete and implement college mentoring program
- **Prepare college on-boarding program for upcoming hiring surge**
- Update and fund faculty awards process
- Pursue Endowment for CAST's first named professor
- **Hire Associate Dean for Applied Research & Development**

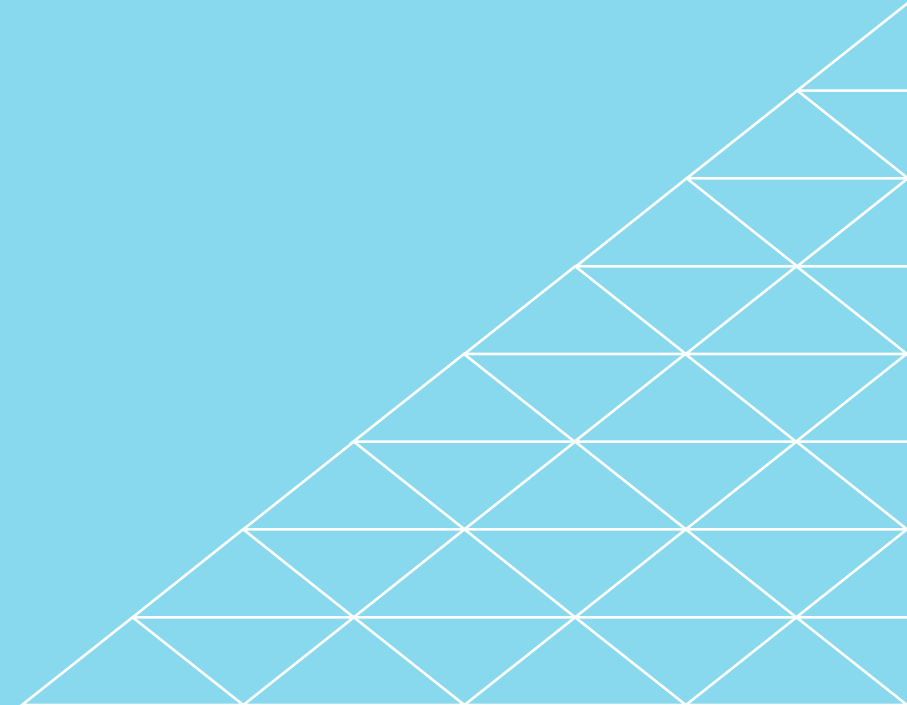
RECRUIT, ADVISE AND INSPIRE DIVERSE, POST-TRADITIONAL TRANSFER STUDENTS TO IMPACT OUR REGION AND THE WORLD

- Complete MOA with Vice Provost for ODCE
- **Reach 5,000 students (certificates, minors, BAS, PSM) by the end of the five-year plan**
- **In-person advisor/recruitment specialist in Sierra Vista, Pima East, Chandler, and Yuma**
- Building on the success of the Basha High School/Chandler-Gilbert CC/CAST pipeline in Cyber Ops, pursue similar partnerships in Cyber and other programs throughout AZ
- **Further our partnerships with DoD Community Colleges and Education**
- **Grow partnerships with Federal & regional LE agencies**
- Expand student awards and scholarships to increase accessibility
- Grow partnership with Global Direct & pursue educational partnerships with Mexico

DEVELOP & DELIVER RIGOROUS AND RELEVANT EDUCATION AND RESEARCH THEN ASSESS OUR PROGRESS THROUGH REGULAR PROGRAM REVIEW

- **Launch 6 –9 Professional Science Masters Degrees over 5 years**
- Start with an educational technology focused degree in Fall of 2022
- Built with stackable Masters Certificates
- **Establish innovation guidelines and encourage sustainable creativity**
- Establish & fund College professional development process
- Develop a student-centric (undergrad & grad) applied research portfolio designed to support best practices in education while impacting a 21st century world
- Solidify our national reputation as a leader in rigorous online & hybrid transfer education for the 21st century workforce

CAMPUS DEVELOPMENT & CAPACITY



Sierra Vista

Regional Context

**FORT
HUACHUCA**

**HUACHUCA MOUNTAIN
RANGE**

**70 MILES TO
TUCSON**

HWY 90

**UA
CAST**

Accessed by
Charleston Rd.,
Colombo Ave., or
Campus Dr.

Fry Blvd.

**SIERRA
VISTA**

HWY 92

HWY 90

Buffalo Soldier Trail

7th St.

**FOLK
LORE**

**12.5 MILES TO
US-MEXICO
BORDER**



Local Context

- Access
- Wayfinding
- Community
- Identity
- Branding



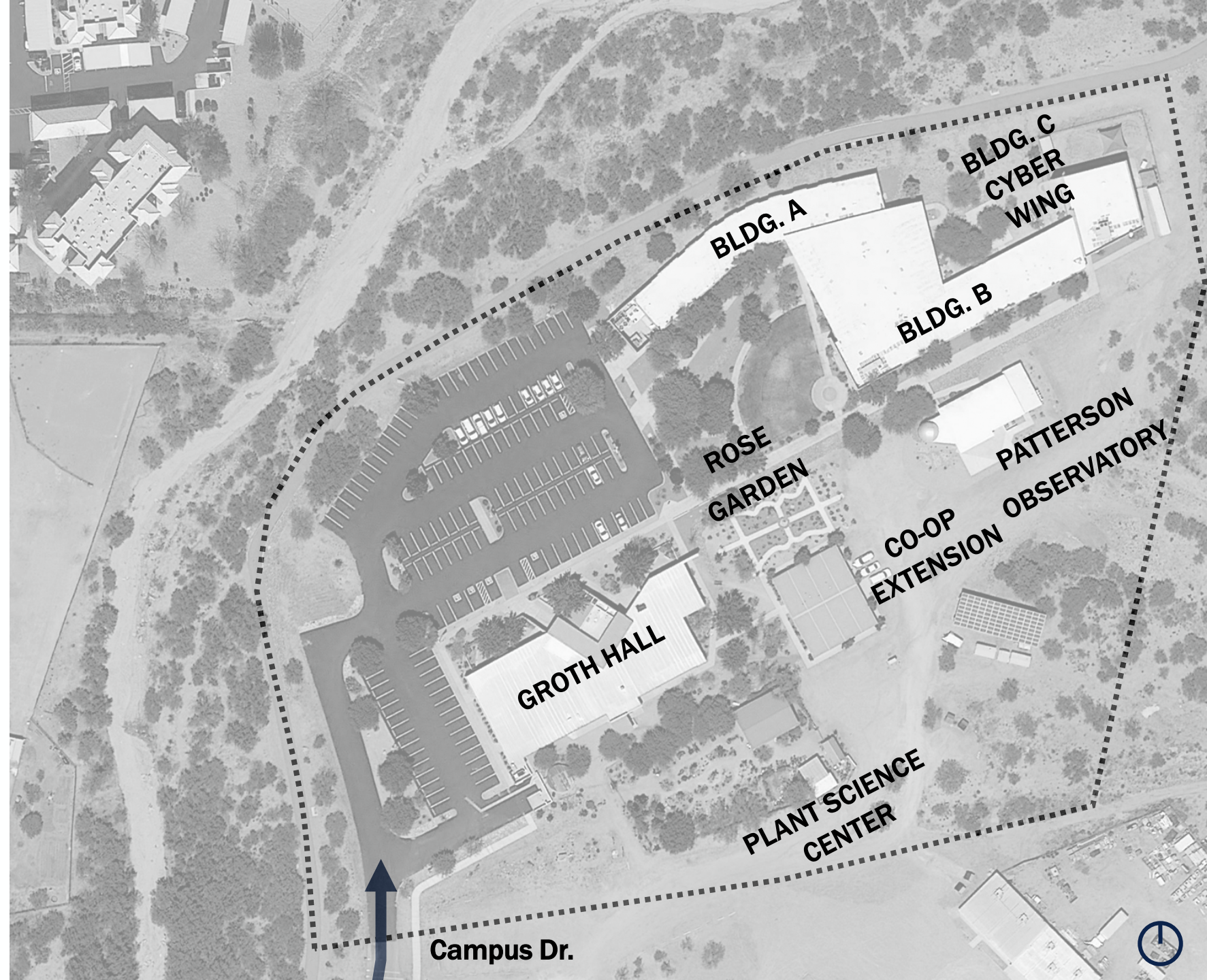
UA CAST CAMPUS

Campus Site*: ~8.25 Acres

Facilities*: ~40,000 NSF

- Access
- Campus
- Density
- Framework
- Service
- Infrastructure

*Note: Values vary by source



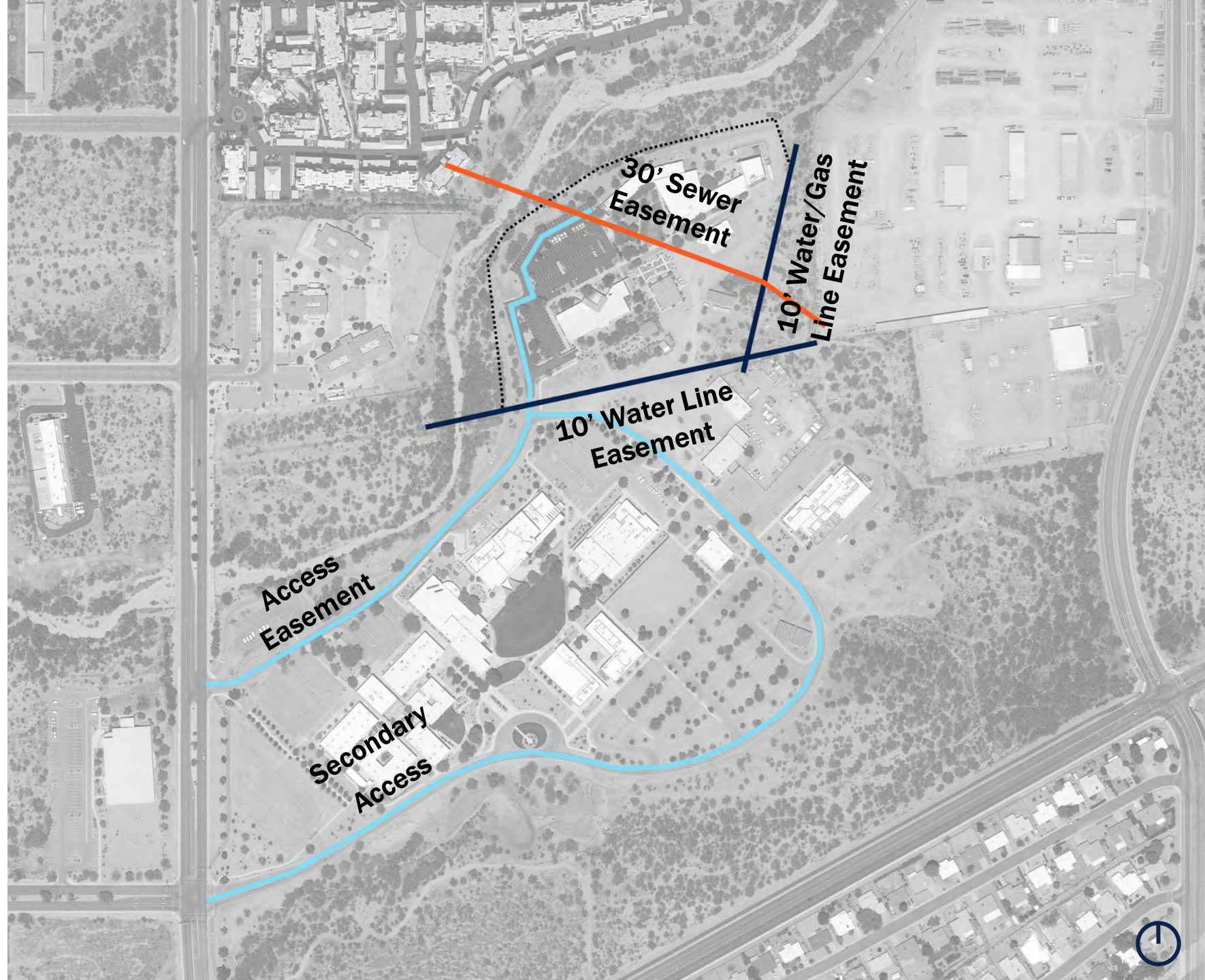
UA CAST UTILITY EASEMENTS

Campus Site*: ~8.25 Acres

Facilities*: ~40,000 NSF

- 30' Sewer Easement
- 10' Water Line Easement
- 10' Water / Gas Line
- Access Easement
- Secondary Access

*Note: Values vary by source



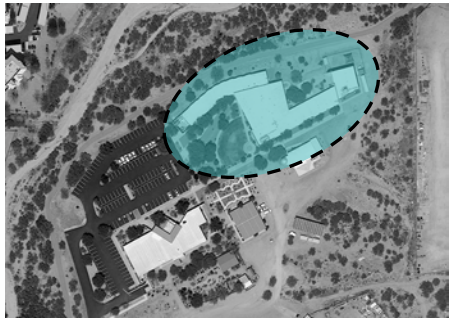
How do you rate the overall campus in the following categories?

Please use the stamp tool on a scale of 1 to 5 to indicate how well the campus spaces serve the following categories. *(5 being the strongest)*

	1	2	3	4	5
• Access					
• Branding & Identity					
• Functional Adequacy					
• Instruction and Research					
• Future Program Ready					

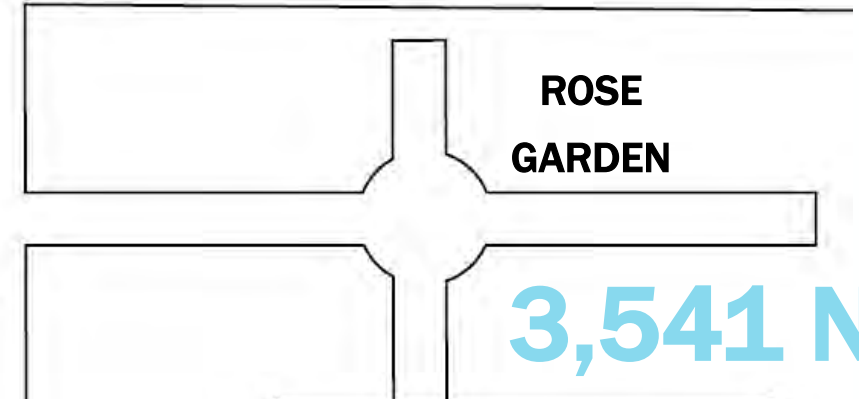
Site

- First buildings opened in 1995
- Adjacent to Cochise College
- Includes Patterson observatory
- Room to grow

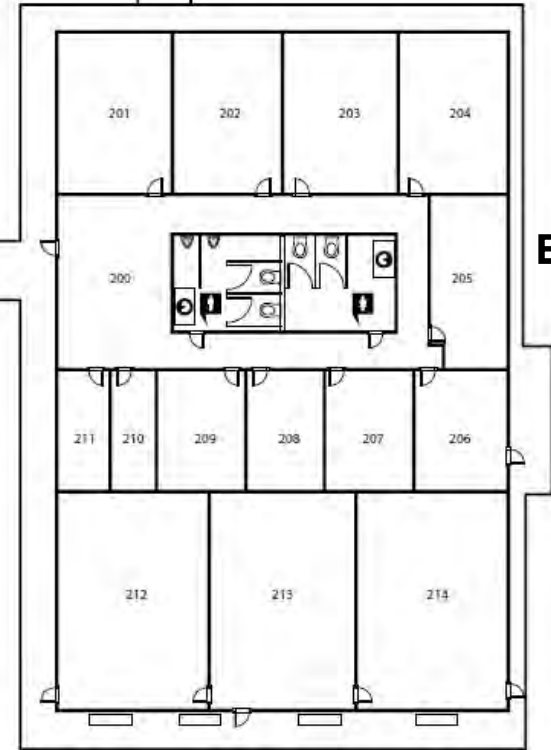


UA CAST CAMPUS

11,926 NSF



3,541 NSF



Groth Hall

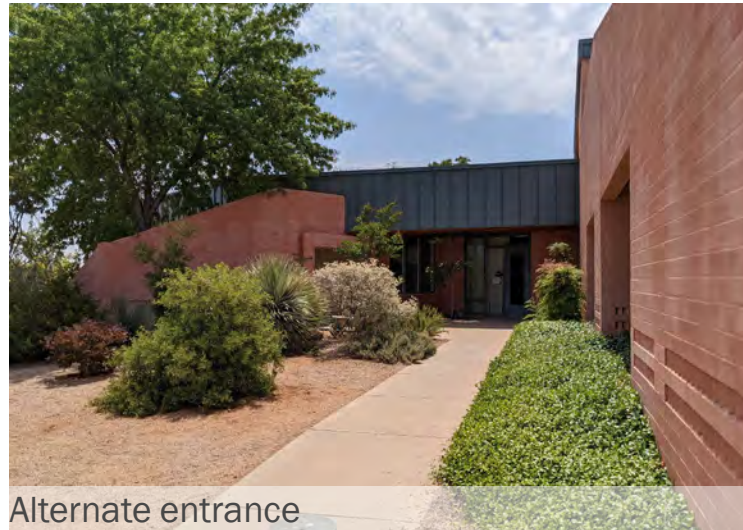
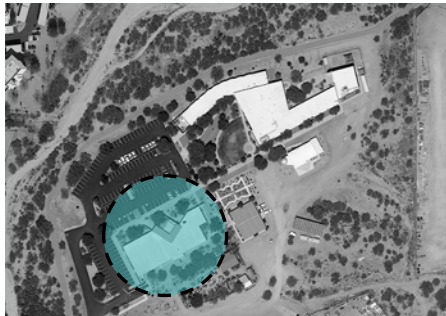
- 11,926 NSF
- 55 rooms
- Office space and classrooms
- Adjacent to Rose Garden and Plant Science Center



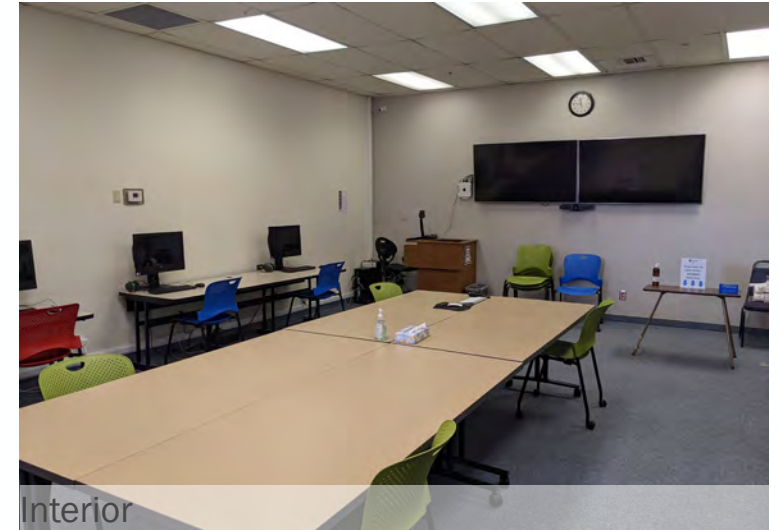
Entrance from parking lot



Interior



Alternate entrance



Interior

Patterson Observatory

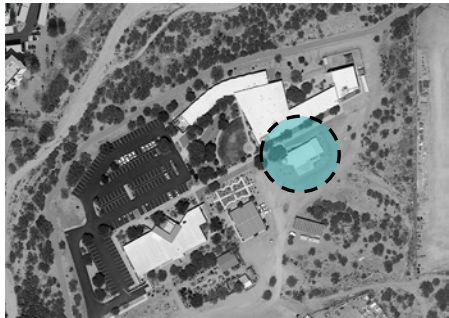
- Part of the University South Foundation
- Opened in 2004
- Public observation nights held once a month



Entrance behind Bldg B



Interior



Interior

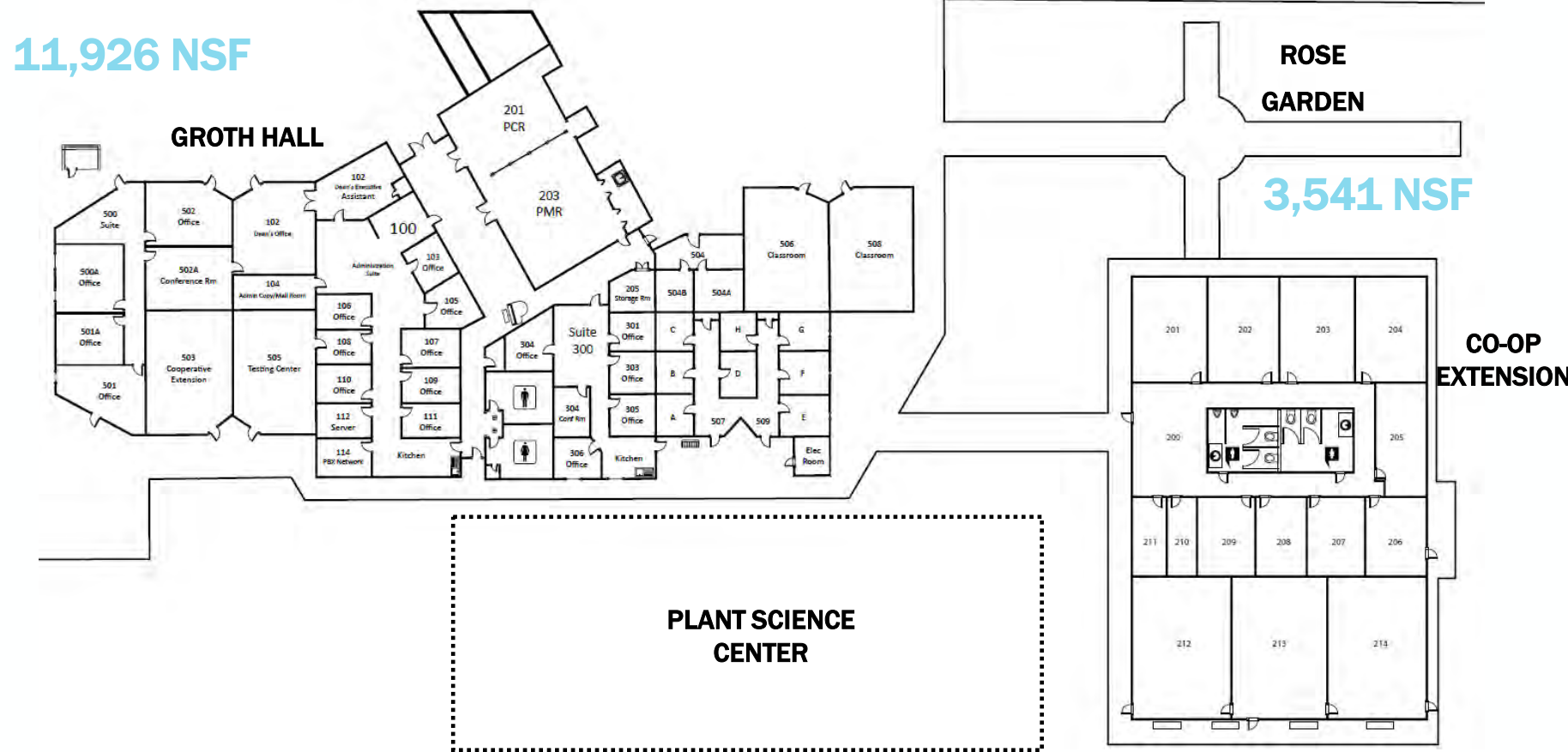


Interior

How do you assess the following categories at Growth Hall and the surrounding context?

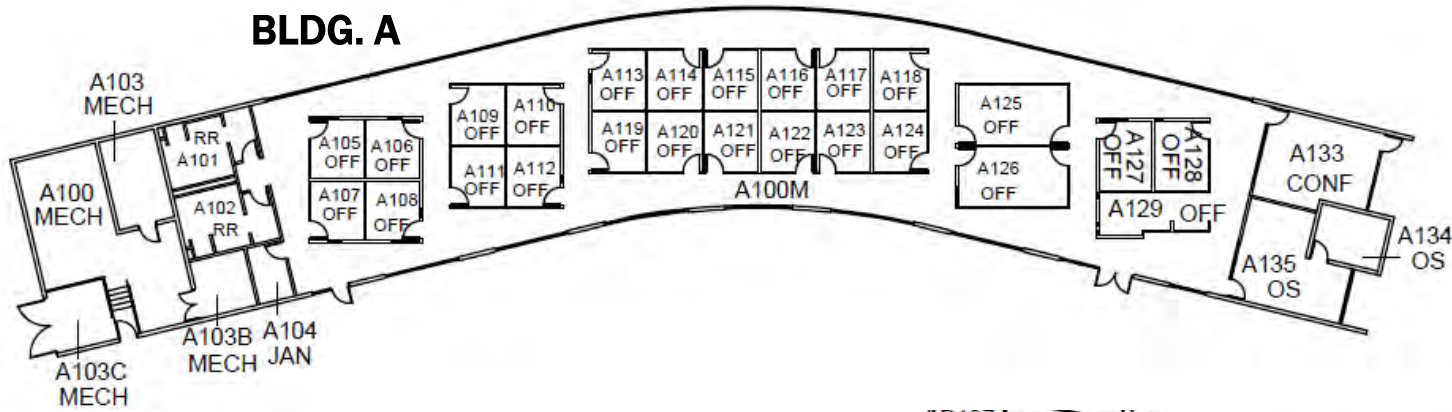
Please use the stamp tool to indicate how well the space serves based on the following categories

- Access
- Branding & Identity
- Functional Adequacy
- Instruction and Research
- Future Program Ready



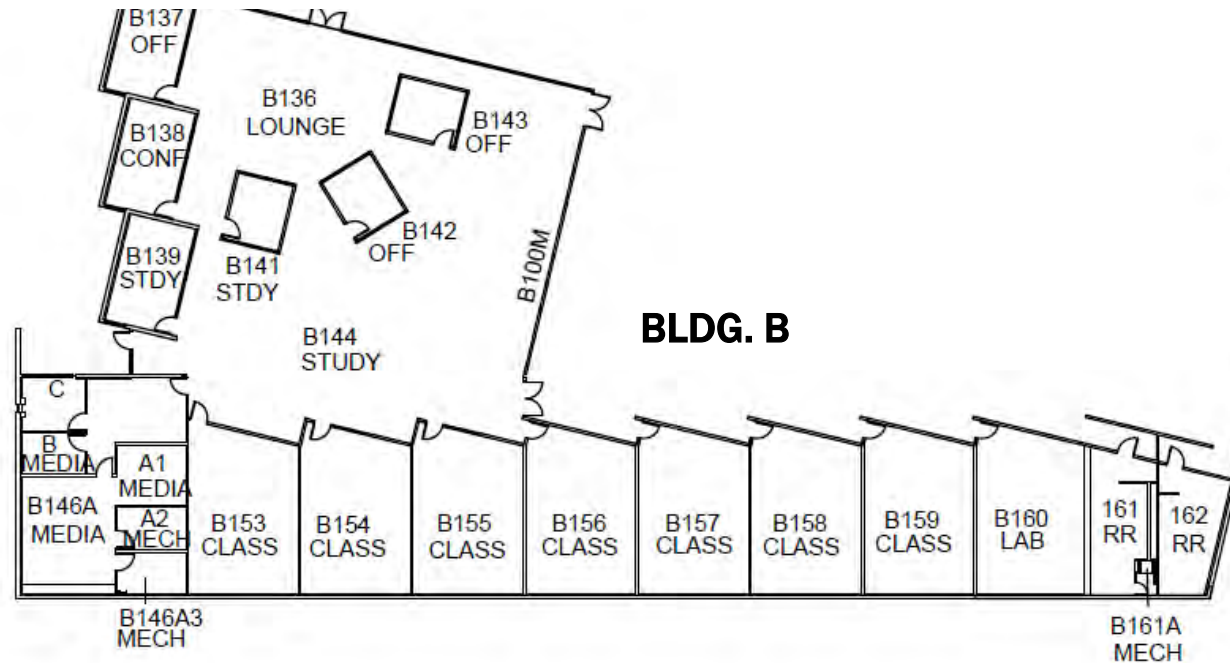
Building A, B & C

BLDG. A

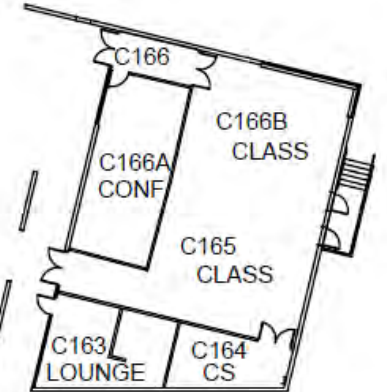


20,934 NSF

BLDG. B



**BLDG. C
CYBER
WING**



BUILDING A

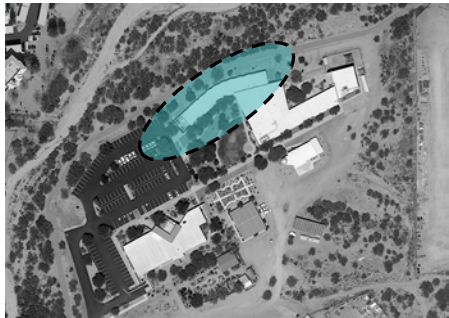
- Northernmost building on the property
- Linear, curved form follows road + informed by the Wash
- Connected to Buildings B and C
- Includes office space and classrooms



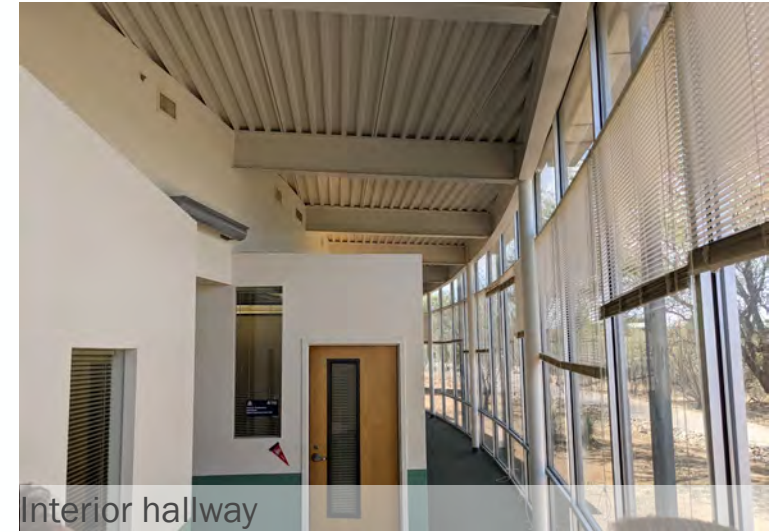
Exterior



Covered walkway



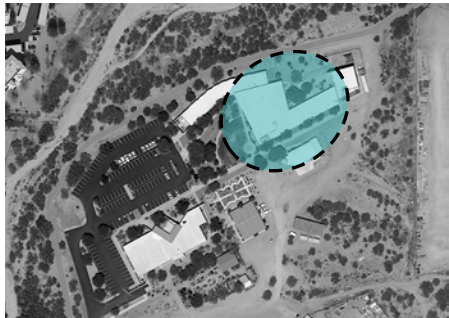
Learning Resource Center



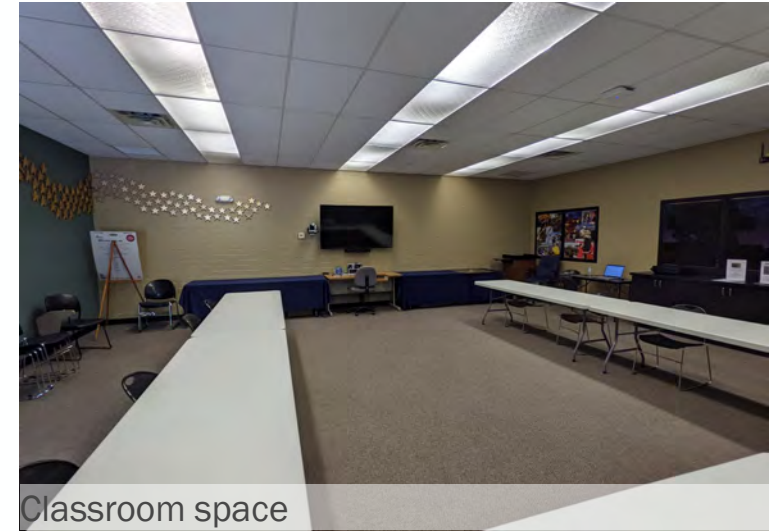
Interior hallway

BUILDING B

- Largest of the 3 connected buildings
- Classroom spaces and study spaces
- Building form creates unique courtyard space
- Adjacent to the Observatory



Interior



Classroom space



Courtyard space



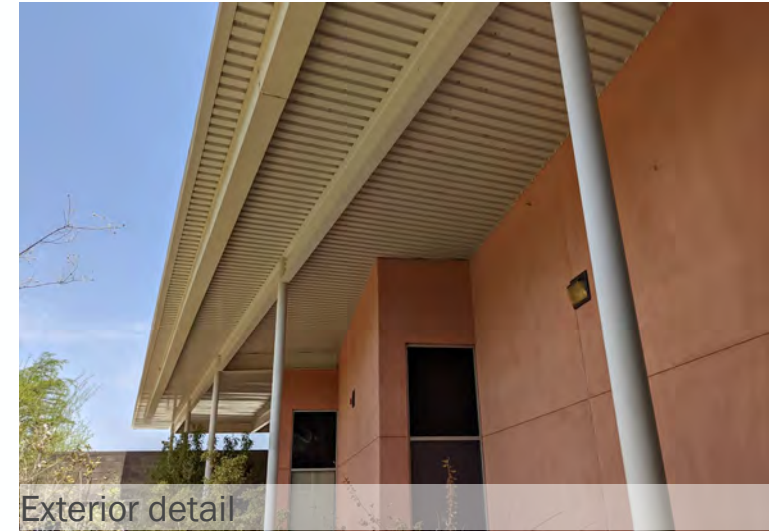
Study space

BUILDING C

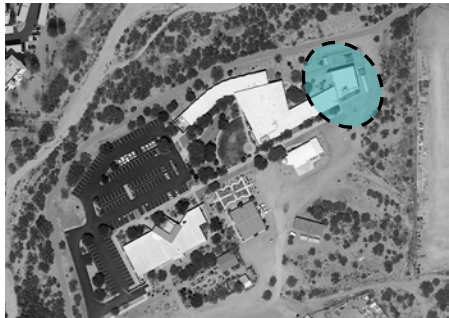
- Smallest of the 3 buildings
- Located in northeastern section of the property
- Designed by HDR in 2001
- Includes multi-purpose and student rooms



Help desk



Exterior detail



Courtyard space from inside

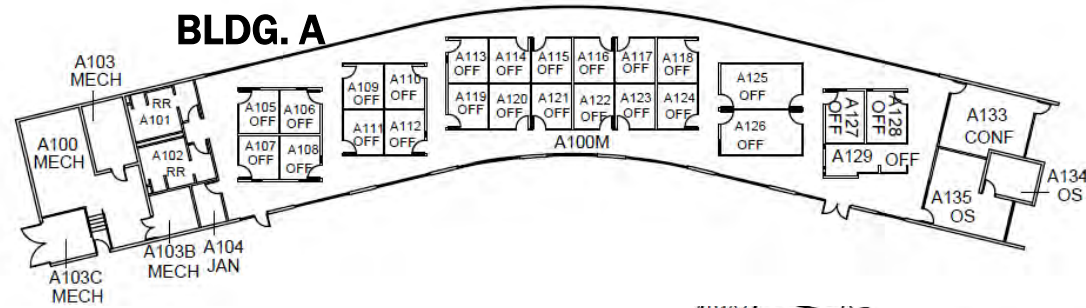


Student space

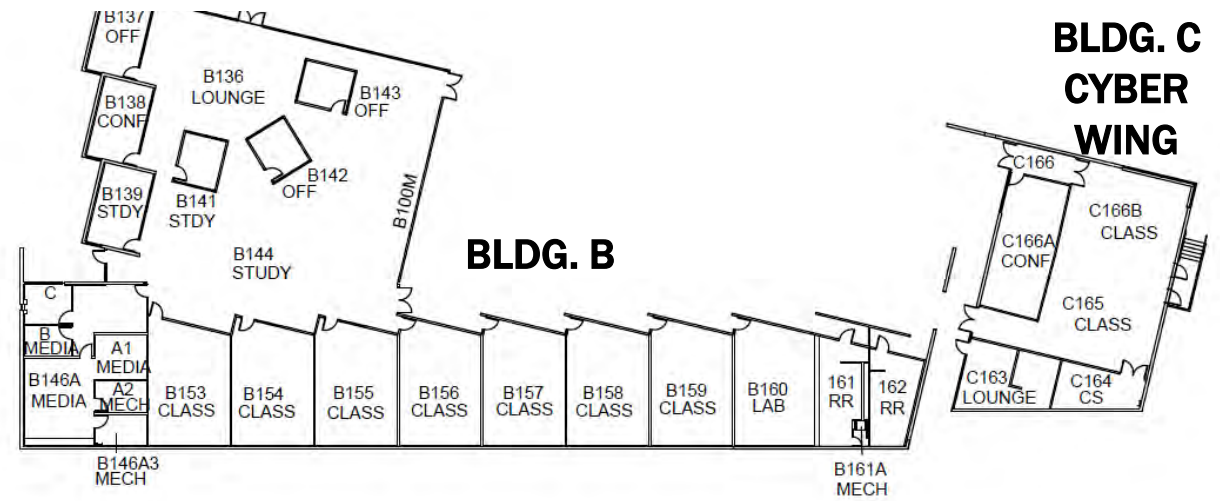
How do you assess the following categories at Building A, B & C?

Please use the stamp tool to indicate how well the space serves based on the following categories

- Access
- Branding & Identity
- Functional Adequacy
- Instruction and Research
- Future Program Ready



20,934 NSF



How do you rate the campus elements as they support current programs?

Please use the stamp tool on a scale of 1 to 5 to indicate how well the campus spaces serve the following categories. (5 being the strongest)

	1	2	3	4	5
• Groth Hall	-----	-----	-----	-----	-----
• Building A	-----	-----	-----	-----	-----
• Building B	-----	-----	-----	-----	-----
• Building C	-----	-----	-----	-----	-----
• Patterson Observatory	-----	-----	-----	-----	-----
• Green Space	-----	-----	-----	-----	-----

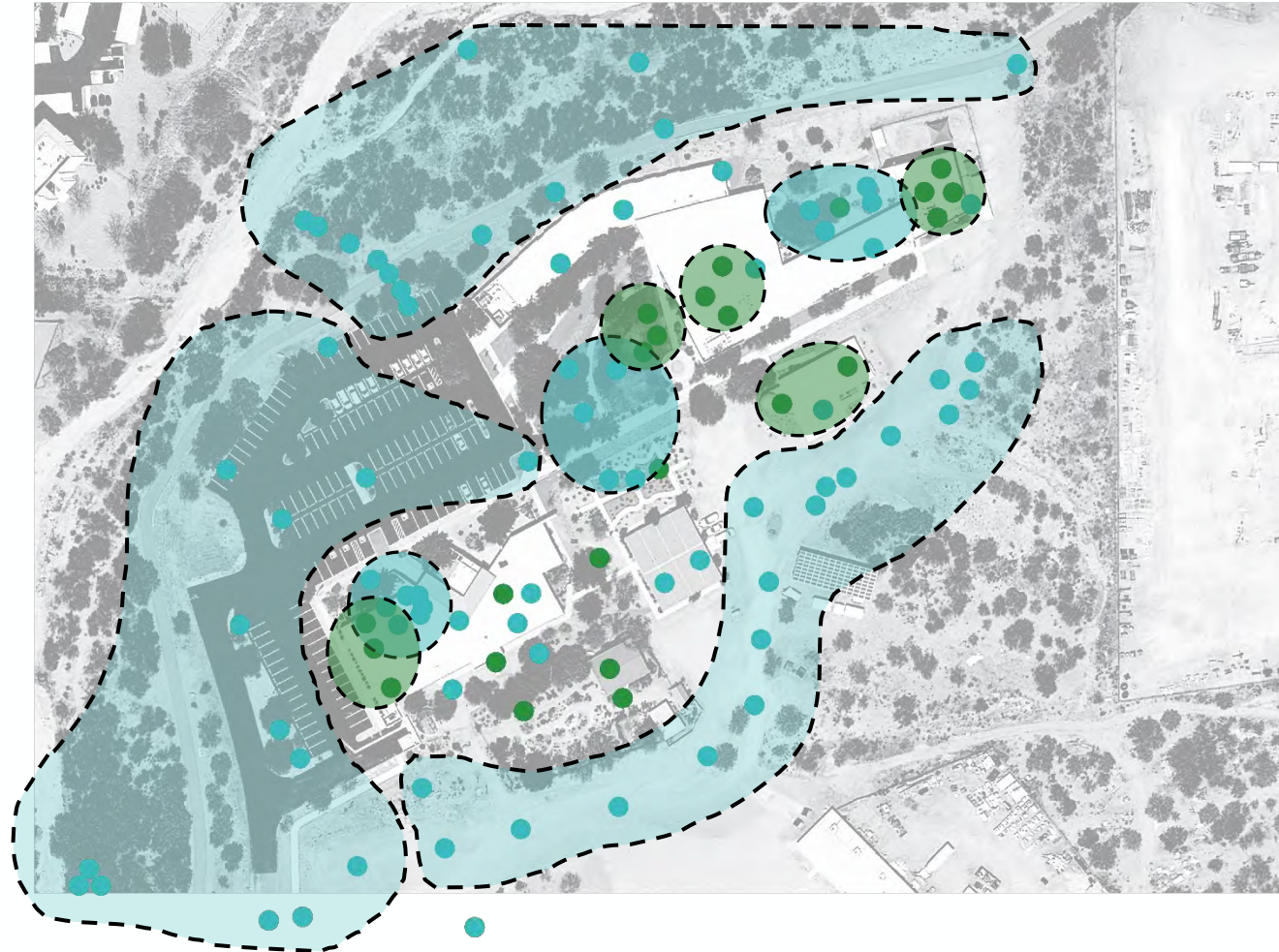
Kick-Off Workshop – Strengths/Opportunities

UA Sierra Vista

● 23

● 75

98



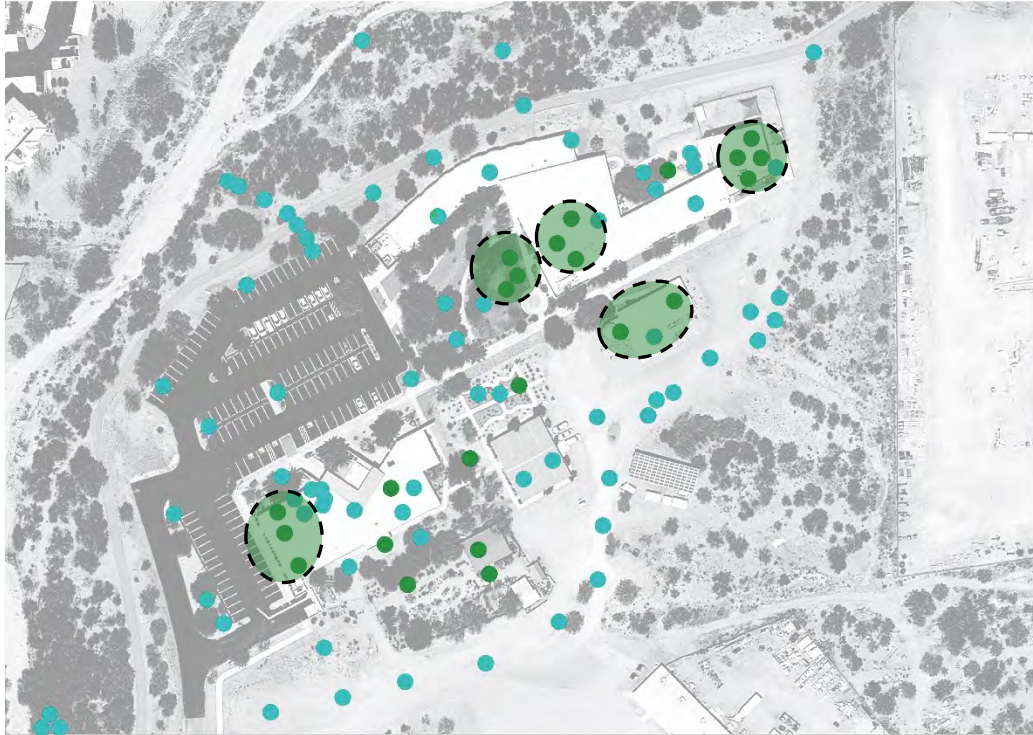
Overall Themes:

- Campus access
- Campus edges & boundaries
- Connections between buildings
- Green space network
- Campus service & utilities planning
- Parking
- Building conditions
- Functional alignment


Campus Feedback

UA Sierra Vista

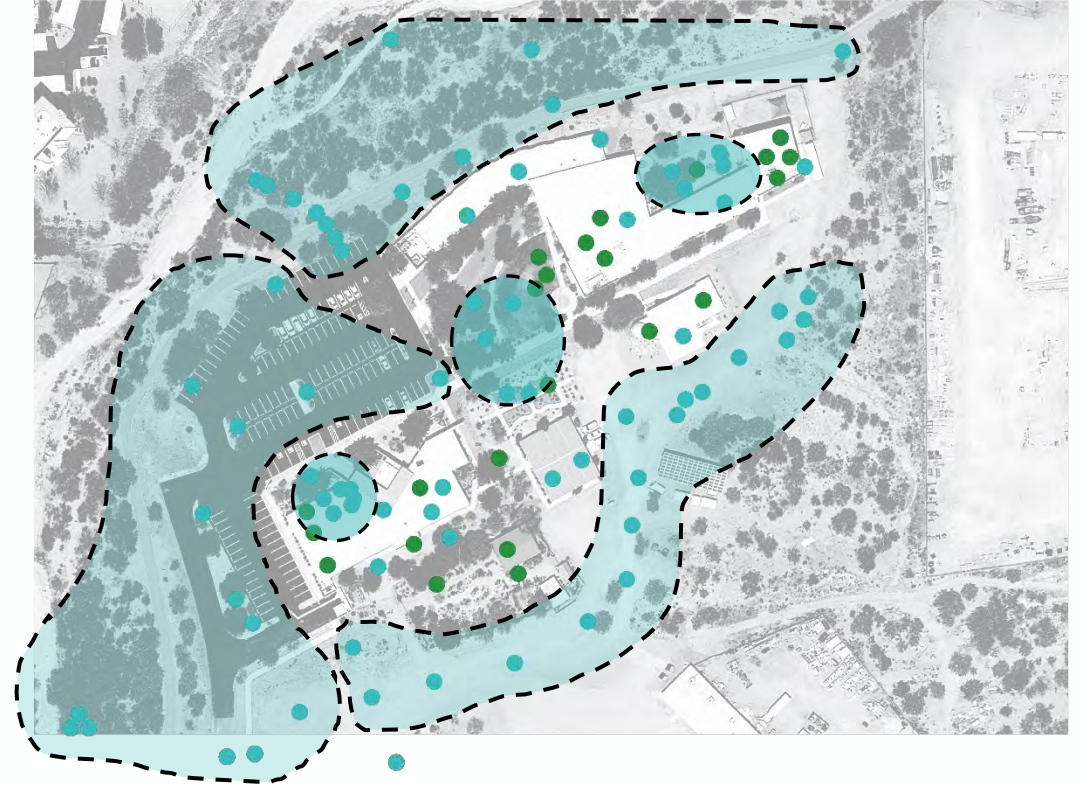
STRENGTHS




- Underutilized building capacity
- Excellent outdoor space opportunities
- Flexible programming opportunities
- Strong site character

 Successful places on campus

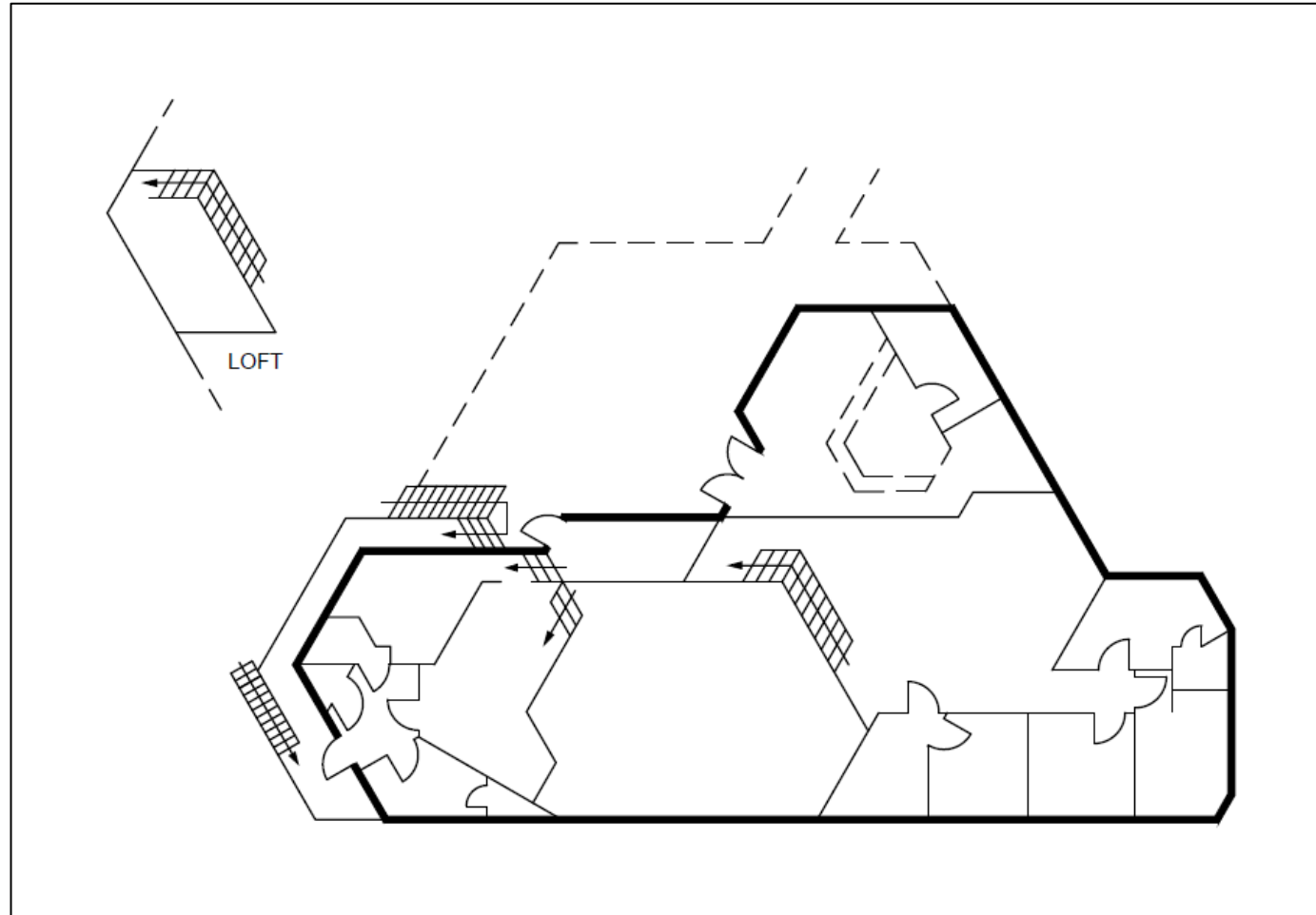
OPPORTUNITIES



- Unplanned land resources
- Opportunity for greater density and interconnections
- Very unique physical campus character

 Places with unrealized potential

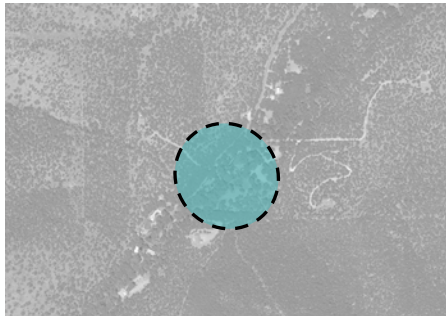
Folklore Center



4,312 NSF

Folklore Center

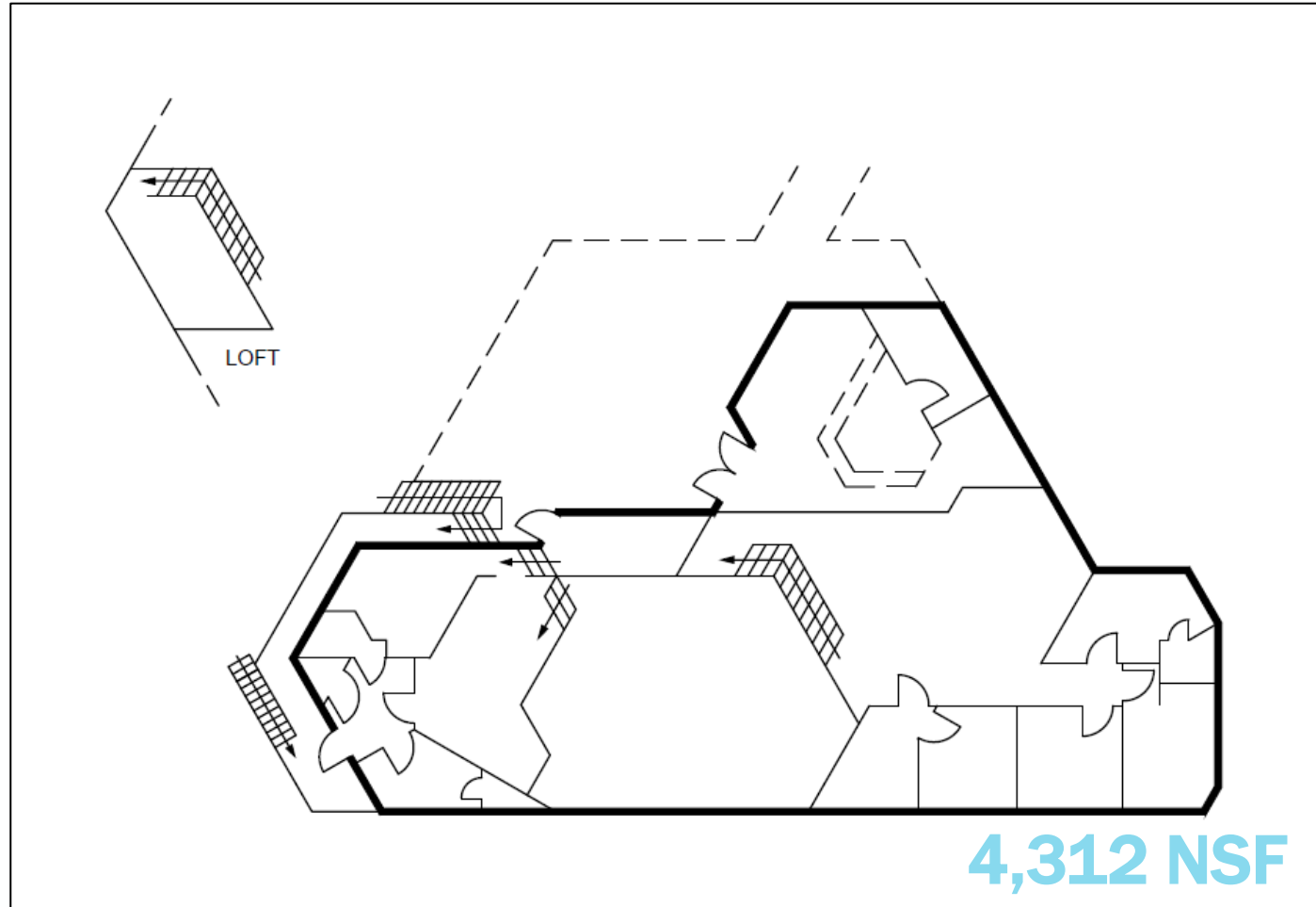
- Founded in 1996
- Property on 15 acres
- Partnership w/ UA begins in 2000
- Located close to Ramsey Nature Conservancy



How do you assess the following categories at the Folklore Center?

Please use the stamp tool to indicate how well the space serves based on the following categories

- Access
- Branding & Identity
- Functional Adequacy
- Instruction and Research
- Future Program Ready



How do you rate the Folklore Center in the following categories?

Please use the stamp tool on a scale of 1 to 5 to indicate how well the campus spaces serve the following categories. (5 being the strongest)

	1	2	3	4	5
• Supporting Community Events	-----	-----	-----	-----	-----
• Site & Visitor Access	-----	-----	-----	-----	-----
• Branding & Identity	-----	-----	-----	-----	-----
• Effective Utilization	-----	-----	-----	-----	-----
• Adaptable to Programmatic needs	-----	-----	-----	-----	-----

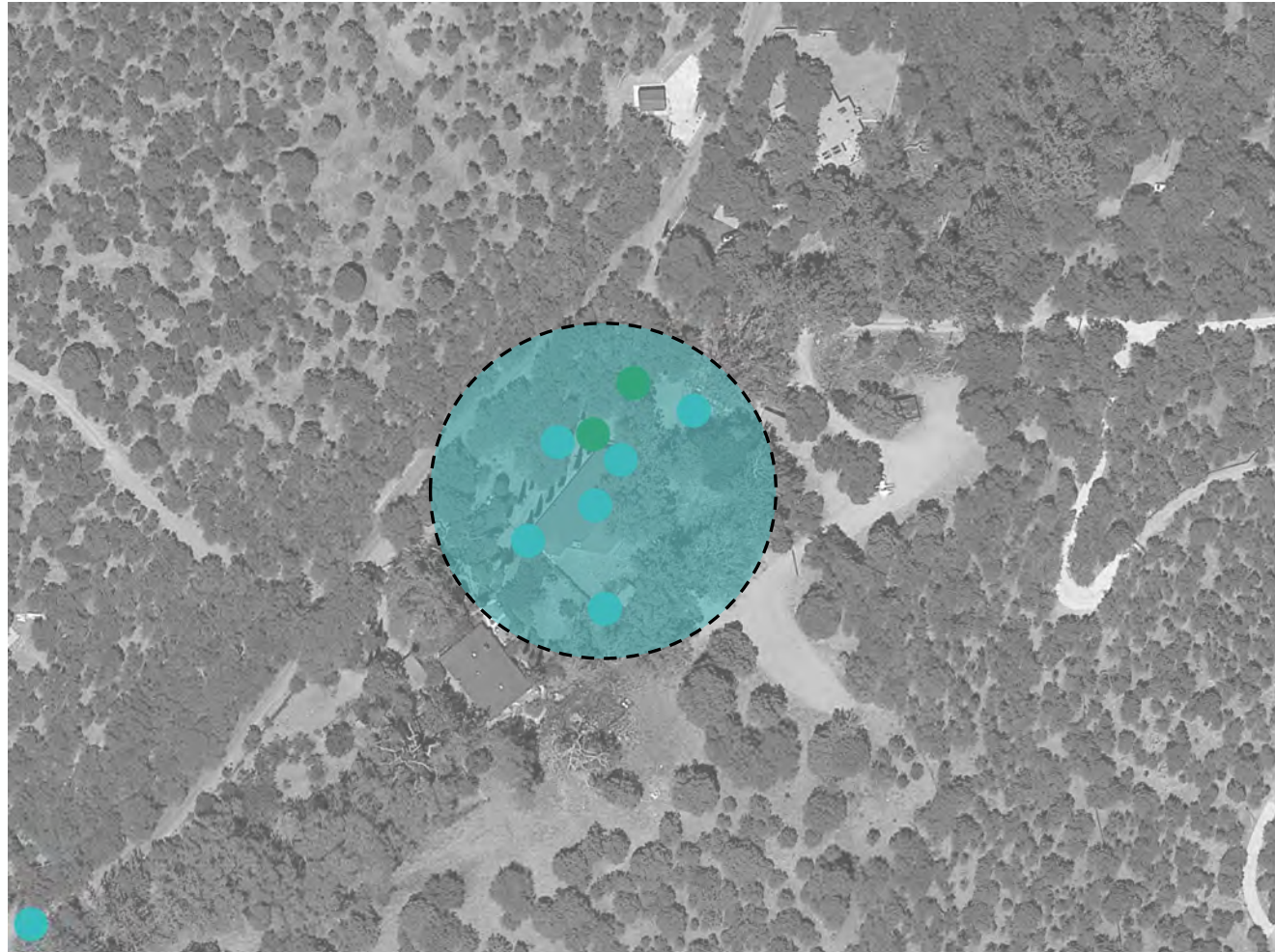
Kick-Off Workshop – Strengths/Weakness Feedback

UA Sierra Vista / Folklore Museum

● 3

● 9

12



Overall Themes:

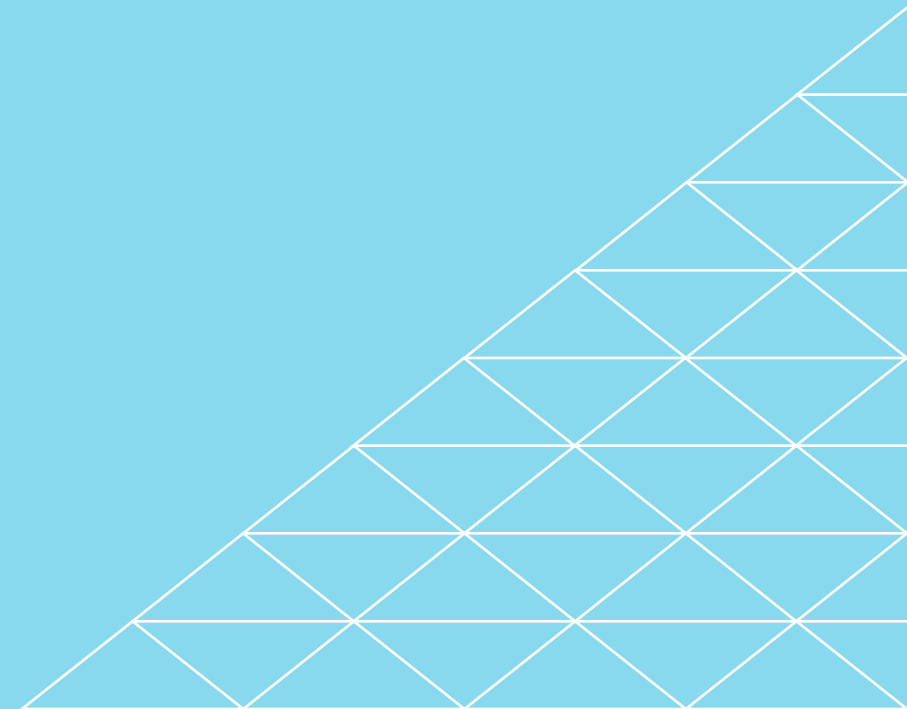
- Access
- Building condition
- Programming
- Community vs Academic
- Building management
- Building access & site navigation

- Any other feedback regarding campus functionality that you would like us to know about?
- What information from the academic and/or research groups should we seek to better inform the process?
- What other advice do you have?



**Discussion
Point**

NEXT STEPS



Next Steps

- Share Academic, Research & Community Impacts
- Group Review
- Technical Assessment
- Steering Committee Update